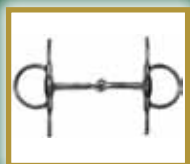


BITS & ACCESSORIES





## CONTENTS



---

**2       Terms & Conditions**

---

**3       Metric Conversion Chart**

---

**4       Equus Horse Boots**

---

**5 - 8    Stubbs Stable Racking**

---

**9 - 10   Fiebing Horse Care Products**

---

**11      Abbey Bits**

14      *Loose Ring*  
22      *Eggbutt*  
26      *Dee Cheek*  
28      *Full Cheek*  
36      *Hanging Cheek*  
38      *Gags*  
48      *Pelhams*  
61      *Weymouths*  
62      *Driving Bits*  
73      *Abbey Dressage Design*

---

**76      Grangers Waterproofing Materials**



## TERMS & CONDITIONS

### Payment

Approved Accounts are allowed monthly credit terms and payment must be made before the end of the month following delivery. A settle discount of 3% on the Nett value of the goods is allowed for payment within ten days from invoice date. This does not apply to sales of leather or to Credit Card Transactions. Late payment will result in loss of credit facilities and we reserve and we reserve the right to charge interest at 2% above the current bank rate for the outstanding period and also recover costs of obtaining payment, including legal fees. Overseas Accounts should be paid by cheque in Sterling drawn on a British bank, by Sterling Bank Transfer or approved Credit Card.

Credit Cards: Payment is accepted on all accounts by Credit Card, but where the value is below £25 we reserve the right to invoke a 3% surcharge. Also any accounts older than 2 months and paid by credit card will carry a surcharge of 3%.

### Prices

Although every effort has been made to include manufacturers latest price increases, the prices shown cannot be guaranteed and goods will be invoiced at those ruling at the time of dispatch. We reserve the right to charge a minimum order value of £15.

### Carriage

Carriage is charged on all consignments of less than £250 NETT value, and on all overseas consignments. For orders in excess of £250 NETT value to one address in the UK mainland, with the exception of some Highland areas, deliveries are carriage paid. Carriage on all Leather deliveries, bulk Liston Locks and Coach & Fridge orders is charged nett, irrespective of total value. Partial carriage may also be charged on textiles over 1.4m wide, bulky or pallet loads, liquids and hazardous/flammable goods requiring special carriage arrangements irrespective of value.

### Claims

Both we and the carriers must be notified in writing as follows:  
Non Delivery of goods - within 10 days from date of invoice.  
Damage or shortage - 3 days from date of receipt

### Returns

Authorisation must be obtained before goods are returned for any reason. This particularly applies to leather, and where approval is not obtained the company reserve the right to charge a restocking fee of 15%. Return carriage will only be reimbursed where goods have been proved to be faulty or supplied incorrectly. Where possible, goods should be returned in the original packaging and small items must be securely packed. The company reserves the right to charge a fee where returned items have been damaged due to improper packaging.

### VAT

Value Added Tax is charged at the standard rate current at time of dispatch to all UK customers and to members of the European Union who do not provide a current VAT ID number. All other international orders will not have VAT charged on them, but import and any other local taxes are the responsibility of the customer.

### Title

The property in any goods sold or delivered by this company does not pass to the purchaser unless and until the full purchase price thereof is paid to us.

### Force Majeure

The acceptance of an order may be revoked (in whole or in part) or delivery dates postponed by us without liability in the event of any contingency beyond our control which does or in our opinion is likely to prevent, hinder, delay, interrupt or interfere with the fulfilment of the order or any part of it.

### Specifications

Abbey England reserves the right to change the specification and/or prices of any item listed in this catalogue without notice.

### Your Attention Is Expressly Drawn To The Content Of This Term Liability For Altered Or Misused Goods

The company shall not be liable for any direct, indirect or consequential loss howsoever occurring suffered by the buyer or any third party arising from the incorrect use of or modification to any goods purchased from the company.

All items should be used for their intended purpose without modification and buyers should test the goods prior to such intended use to satisfy themselves of the suitability for that purpose.

Failure to use goods for their intended purpose or modifying goods will void any warranty, whether express or implied by statute, and whether given by the company or by any manufacturer. In the event that the buyer wishes to use a product in a way not intended by the manufacturer, or has any doubts about the suitability of a product for a particular purpose, they should satisfy themselves as to the product's suitability for that intended purpose prior to use.

In the case of leather dyes and treatments, whilst most dyes and treatments will provide the desired effect, some dyes and treatments may have adverse effects, and it is strongly recommended that the dye or treatment is tested on a small, non-visible area of the item prior to overall use of the product on any items. The company will not be responsible for any direct, indirect or consequential loss howsoever occurring suffered by the customer or any third party through failure to adequately test the dye or treatments prior to use, and it is the buyer's responsibility to satisfy themselves as to any particular dye or treatment's suitability.

The company does not exclude liability for death or personal injury arising from the correct use of any goods.

#### Abbey England Ltd.

Knutsford Trade Counter open

Mon - Thurs 10am - 1pm & 2pm - 4pm

Fri 10am - 1pm

#### Bank Details

Natwest Bank plc  
2 Chestergate  
Macclesfield SK11 6BA  
Sort code 01-05-41  
Account number 45935610

Iban Number: GB94 NWBK 0105 4145 9356 10

BIC Number: NWBK GB 2L

Edition 31b

Registered in England Number 1638775 VAT Number GB 380 3236 70

[sales@ridingbitz.com](mailto:sales@ridingbitz.com) [www.ridingbitz.com](http://www.ridingbitz.com)

Telephone: +44(0)1565 650343 Fax: +44(0)1565 633825

## NOTES ON THE USE OF THIS CATALOGUE



1. The sizes shown are an indication of the normal stock. Many are available on a ready to make basis.
2. Most Rubber and Vulcanite moulds do not extend above 6" (15cm)
3. All the Pony Vulcanite bits are available in 4", 4½", and 5", and are the same price as the Standard version.
4. Bits of 7" and over will be priced at the time of ordering.
- 5a Most cheeks will accept a wide variety of mouthpieces and where a of cheek and mouthpiece is not listed, please contact for a quotation.
- 5b. Bits assembled to the customer's instructions are not normally returnable.
- 5c. This also applies to special bits where the photograph is shown in the catalogue but no price is listed.

Telephone orders may be placed between 9.00am to 5.00pm Monday to Friday. Orders may also be sent by Fax or by e-mail 24hours a day at [sales@ridingbitz.co.uk](mailto:sales@ridingbitz.co.uk)

### METRIC CONVERSION

Imperial - Inches	Metric - Millimetres
3	75
3¼	81
3½	90
3¾	95
4	100
4¼	105
4½	115
4¾	120
5	125
5¼	130
5½	140
5¾	145
6	150
6½	160
7	175
8	200



## Equus Boots

Manufactured in the UK using top quality materials, Equus Overreach Boots set the standard for others to follow.

### Overreach Boots

#### Bell Boots

Heavy	Extra Large	Ribbed
Heavy	Large, Medium, Small	Ribbed
Standard	Large, Medium, Small	Ribbed
Heavy	Large, Medium, Small	Plain
Standard	Large, Medium, Small	Plain

Standard colours Black and White, other colours available to order.

All the boots above can be supplied with Velcro side opening

#### Eventa Boots - Elongated neck for a closer fit

Large, Medium, Small	Ribbed
Extra Large	Ribbed

#### Globe Boots

Heavy Weight	Small	Plain Only
Heavy Weight	Medium	Plain Only
Standard Weight	Small	Plain Only
Standard Weight	Medium	Plain Only

#### Scalper Boots

Short	Large, Medium, Small
High	Large, Medium, Small

#### Quarter Boots

Medium, Small

#### Straight Boots (Trotting)

Large, Medium, Small	Plain Only
----------------------	------------

#### Quick Release Overreach Boots Large, Medium

Colours: White, Black - Other colours available to order.

#### High Scalper Boot



#### Short Scalper Boot



#### Quarter Boot



#### Straight Boot Std.



#### Quick Release Overreach



#### Bell Boot Standard



#### Bell Boot Standard



#### Bell Boot Heavy



#### Eventa Boot



#### Globe Boot







### S9111 Rug Master Mobile

Strong enough for ten rugs - more if doubled up - and no wall fixing. Mounted on four smoothly swivelling castors, two are fitted with brakes. Three piece slot together frame - no tools required. Constructed from Bright Zinc Plated steel. Flat packs for easy storage and transport



### S159 Compact Driving Cone FEI

With distinctive lines, this conforms to current FEI dimensions and stacks well. Tough Stubbythene moulding with a hole in the top to take the penalty ball (not supplied). This hole doubles as an aid for easy handling. Does not wilt in the sun! High visibility orange colour. (A full competition set consists of 40 cones)



### S112 Life Size Display Horse

Extremely realistic thoroughbred. Opening jaw to take a bit etc. Fibreglass construction. Synthetic mane & tail. Height: 196cm Length: 208cm Width: 48cm Height to Withers: 146cm (14.1hh) Black, Brown, White



### S53 Saddle Display Stand - Fibreglass

Light brown fibreglass moulding on bright zinc plated steel frame - sturdy construction. Height 91cm Width 55cm Length 71cm Weight 9.6 kg



### S18P Folding Pole Saddle Rack

Similar to the fixed pole S17P but folds down when not in use. Pole remains captive when in down position. Very popular. Large 4cm Diameter steel tube construction. Height: 28cm Width: 6cm Depth: 46cm Weight: 1.08 kg. Black, Red



### S3PE Large Hanging Manger

The only hook on manger with anti waste bars, this is based on the fixed wall manger. Moulding in White, Red, Blue, Green, Black or Grey. Bright zinc plated steel frame



### S200 Munch Station

Natural ground level feeding; also helps avoid you being covered each time a hayrack is filled! Bars are closely spaced (gaps 55mm), increasing feeding time and reducing boredom. Tilted rot proof base ensures all hay is accessible. Corner Manger S2P Supplied Separately



### S2P & S2PB Corner Manger and Frame

Of smooth lines, this full size manger is in Stubbs usual tough Stubbythene. Mostly used in conjunction with tubular support frame S2PB (sold separately). Complete with anti-waste bars. Capacity 31 litres



### S20 Bridle Rack

Outstanding model with specially designed round cowl to prevent kinking of leather. Pressed steel construction and Stubbyfine coated. Height 14cm Width 11cm Projection 7cm Weight 0.17 kg Black, Red, Blue, Brown, Green, Pink



### S1066 Stubby Star - Tipping Barrow

A natural progression from the 1066 Stubbies Barrow. Easy to operate by using a tip and flip action, regardless of whether it is full or partially loaded. Body tips beyond vertical. Superbly balanced when loaded. Ultra tough STUBBYTHENE body in Blue, Green, Pink or Purple. Steel reinforced tipping edge. Mounted on two large 40cm pneumatic wheels. Fully galvanised frame with wear pads on the legs. Packaged with handles, legs and wheels inside the shrink wrapped body (quickly assembles with 6 bolts - 17mm spanners required) and complete with a POS label.  
Length ... 187cm: Width ... 86cm: Height ... 86cm  
Dry capacity ... 210ltrs: Weight ... 33.5kg:  
Packed size ... 43 x 86 x 137cm

## STUBBS TACK ROOM EQUIPMENT

Stubbs Tack Room

Equipment made in the UK



**S2304 Luggage Rack with End Bars**

Further developed since its introduction - end bars have been added to prevent smaller items dropping out when used in lorries and trailers. Incorporates two large storage hooks below. Often used in multiple units end-to-end.



**S456 Supermate**

Ergonomically balanced, the handle is 10cm lower and 10cm further forward compared to High Stable Mate, putting your hand over the load. Only one size necessary. Usual shatter resistant STUBBYTHENE moulding. Simple drop in storage for the rake (usual long length). Steelwork in Red, White, Blue, Green or Pink.

**S17 Saddle Rack**



A most popular stalwart in the Stubbs range, this tubular steel saddle rack suits virtually all needs. Stubbyfine coated in a wide range of colours. Height: 27cm Width: 25cm Projection: 54cm Weight: 1.34 kg Black, Red, Blue, Brown, Green, Pink, Grey

**S21S Harness Rack Set**



Consisting of collar, saddle, bridle and reins racks, this traditionally styled set is very robust. Weight: 2.78kg Parts available separately:

S21AHarness Collar Rack  
S21BHarness Saddle Rack  
S21CHarness Bridle Rack  
S21DHarness Rein Rack



**S88 Rug Rail Rack**

With handy hooks both ends, this is particularly suited to use outside the stable. Black Stubbyfine coated. Height: 18cm Width: 91cm Projection: 18cm Weight: 0.92kg



**S117 Fore Leg**

**S118 Hind Leg**

Fibreglass display leg mounted on a varnished hardwood base. Height 66cm Width 30cm Depth 30cm Weight 2.68 kg



**S1122 Horse Head**

Allowing display of a particular bridle and adding atmosphere to any shop this is rather special. Faithfully reproducing all the detail of Stubbs' Life Size display Horse, this will take pride of place on any wall. Jaw opens to enable a bit to be inserted. It is simple to attach, achieved by key-hole shaped holes in the rear.



**S505 Semi Traditional Saddle Horse**

Solid and pleasing this will quickly become an old favourite. Comfortably sized for 2 saddles with space for loads of cleaning kit on shelf below. The wooden top is untreated and will take on character as it ages. Strong steel frame is easily assembled from the flat pack to give great rigidity. Steelwork is matt Black powder coated and stands on rubber feet.



**S173 Smoothie Slip On**

This specially developed shape creates the ultimate make-over for the world's favourite tack room fitting (there are now nearly 2 million Stubbs S17 Saddle Racks worldwide). Available in range of colours. Length 42cm Width 25cm Height 15cm Weight 0.6 kg



**S4900 Collapsible Tack Trolley**

A smart design that folds down or rebuilds in less than 10 seconds. Designed to carry 2 bridles and 1 or 2 saddles, the lower tray has a 2cm lip all round to contain tack boxes etc. Particularly suited to livery stables. Large 20cm wheels. Black Stubbyfine coated steel construction.

Erected: Height 98cm Width 56cm Length 84cm  
Folded: Height 31cm Width 99cm Length 99cm Weight 8.8 kg





S90 3 Arm Rug Rack  
S91 5 Arm Rug Rack

This popular swivelling design provides easy storage of rugs and blankets. Folds flat against wall when not in use. Strong tubular construction



S49 3 Leg Saddle Stand

Lightweight Stubbyfine coated steel construction.  
Low: Height: 61cm Tall: Height: 84cm

Also Available as S493 with removeable legs



S44AFT Life Size Display Horse

American style, heavy duty plastic feeder. An Anti-waste ring can be added (S44AWR). Fitted in corner of stable using 3 - S85PS Spring Hooks on Plates (not included). Black, Blue, Green, Red, White



S46 Chip Fork

Strong steel yet lightweight hot dip galvanised shavings fork. 120cm wooden handle, usually supplied separately for ease of packing.

S46A Head Sold Separately Also.



S4P Corner Manger

Fitted with a protective steel angle frame, these mangers are bow fronted and come complete with anti-waste bars. Very tough Stubbythene. Steelwork bright zinc plated. Height 28cm Width 58cm Depth 50cm Weight 3.78 kg Capacity 33 litres



S85A Flat Sided Hanging Bucket

Heavy duty moulding fitted with a thick galvanised handle shaped to aid hanging from the S85PS Spring Hook on Wall Plate. Height: 33cm Width: 39cm Depth: 36cm Capacity: 18 litres Weight: 1.98kg

Also Available as S85 3 Gal version



S2929 Tool Locker

Stop tools being borrowed with this brilliant idea. Ideal in livery yards. Simply lean tools against wall within the Tool Locker and lock the door when you have finished. (Lock included.) Screws covered when closed. Name label / POS info. Black STUBBYFINE coated steel construction.



S204 Quad Bridle Rack

Set of 4 cowl mounted on a single back plate. Simple and economic.  
Height ... 5cm  
Width ... 65cm  
Depth ... 7cm  
Weight ... 1.05kg



S51 Saddle & Bridle Trolley

Carries 3 saddles on large 20cm wheels. Now with bridle hook on rear. Stubbyfine coated Black. Height 127cm Width 48cm Length 59cm Weight 6.3 kg



S206 Bridle Carousel

Revolving design is both attractive and space saving. Permitting the display, storage and cleaning of six bridles. Very popular. Black Stubbyfine coated steel wall bracket and Red coated carousel lies flat for packaging. Height 46cm Width 40cm Depth 55cm Weight 2.3 kg



S141 Sectional Hose Boom

Used by professionals to wash or hose down horses without the usual hazards of a hosepipe on the ground. It also makes the task much easier. The sturdy steel construction, hot dip galvanised after manufacture, is hinged on wall brackets allowing the boom to be folded back to the wall when not in use. Sectionalised into four main parts, maximum piece length 1.2m for easier delivery. Simple bolt together. (Hose pipe not included.) Height 241cm Width 10cm Projection 270cm Weight 16 kg Packed size 121cm x 33cm x 15cm

## STUBBS TACK ROOM EQUIPMENT

Stubbs Tack Room

Equipment made in the UK



**S202** Portable Saddle Rack - Twin  
**S201** Portable Saddle Rack - Single

Suiting all indoor and outdoor requirements where fixing is not desirable or where portability is required. Each incorporates a hook for bridles.



**S28AB** General Purpose Hook Set

Immensely popular, simple design in a set of 5. Now attractively packaged. Height: 10cm Width: 2cm Projection: 6cm Weight: 0.27 kg Pack size: 9.5 x 11 x 7cm Black, Red



**S94** Handy Hanger

As useful at shows as at home, this 4 hook model will hang on fences, doors etc. Steel construction. Height 18cm Depth 6cm Width 36cm Weight 0.95kg Black, Red, Pink



**S22W** Wooden Boot Jack

Most attractive hardwood. Beautifully handmade. Non-slip rubber tread. Very popular at home or in the car. Height 9cm Width 11cm Length 36cm Weight 0.67 kg



**S28** Head Collar Hook

Substantial size and construction. Height: 23cm Width: 3cm Projection: 11cm Weight: 0.42 kg Black, Red



**S80** Plastic Feed Scoop

Tough Stubbythene moulding with Stubbyfine coated steel handle. Graduated markings. Height: 10cm Width: 23cm Depth: 34cm Dry Capacity: 2.7 litres Weight: 0.47kg Black, Red, Blue, Green, Purple, White, Pink



**S26** Large Stud Card Holder

Display horse details on printed card protected by plastic wallet. Holder is pre-galvanised steel and coated Red or Black. Card Size 15cm x 10cm Weight 0.33 kg Spare Card, S26A and Wallet S26B Available separately.



**Tie Rings**

**S30LS** Long Threaded Shank  
**S30S** Short Threaded Shank  
**S30PL** Stall Guard Plate  
**S30P** Plate Tie Ring



**S48** Poly Saddle Horse

Maroon Polyethylene top on tubular legs. Moulding has some "give" making it ideal for trying saddles. Height: 81cm Width: 70cm Length: 66cm Weight: 8.2kg



**S5PE** Lightweight Portable Manger

Moulded in tough Stubbythene with black coated hooks. Height: 25cm Width: 39cm Depth: 32cm Capacity: 15 litres Weight: 1.37kg Blue, Burgundy, Green, Red, White, Pink, Purple



**S521** Mountie

Step up with ease on the new Stubbs mounting block. Tough and durable Stubbythene moulding with slip resistant treads and rounded corners. The Mountie is stackable, extremely versatile and has numerous uses. Blue, Green, Red, Pink



**S14** Haysaver Hay Rack

Substantially reduces wastage as only the hay pulled comes out of the rack. 4 separate mounting brackets. Hot dip galvanised steel. Height: 50cm Depth: 40cm Width: 90cm Weight: 4.2kg

## Fiebing Horse & Leather Care



### Fiebing Saddle Soap

Yellow 3oz  
Yellow, White, Black 12oz

### Green Clean

Fiebing's Green Clean spot and stain remover contains Tea Tree Oil to clean and condition your horse's hair. Use Fiebing's Green Clean to quickly and easily get rid of urine stains, grass stains and manure stains. Fiebing's Green Clean contains no bleaches or dyes and removes wet and dry sweat stains. Spray it on and wipe it off. Rinsing is not required.

### Hoof Dressing with Brush

A liquid dressing that imparts a semi - gloss finish to hooves and also helps to keep the hoof healthy. 946 ml

Equine Show Pack - Shampoo & Detangler in one handy pack

### Detangle & Shine -

Conditions the horse's hair & skin and can be used on wet or dry hair. Works instantly no matter how matted or tangled. Concentrated so very little needed to give a smooth tangle free mane and tail.

### Leather Show Pack -

Neatsfoot Oil & Saddle soap in one handy pack

### Care - 4-Way Conditioner

- Preserves, Strengthens, Cleans, and Beautifies

237 ml  
473 ml  
946 ml  
3.79 l

### 100% Pure Neatsfoot Oil

- 473 ml  
946 ml  
3.79 l



Green Clean



Satin Sheen



Blue Frost



Horse Salon Shampoo



Liquid Glycerine Saddle Soap



Foaming Saddle Soap



Hoof Polish



Fiebing Saddle Soap



## Fiebing Horse & Leather Care

### Satin Sheen

Keeps Manes and tails on horses tangle free. Produces a healthy Satin Sheen and very soft coat. Repels dirt and dust.

473 ml  
946 ml  
3.79 l

### Horse Salon Shampoo

Blue Frost Whitening Shampoo

1 litre  
0.5 litre

### Hoof Polish

A liquid polish for that "Show Ring" look. Easy application bottle. Dries in moments. Non-flammable.

238 ml

### Liquid Glycerine / Saddle Soap

Specially Formulated for cleaning, preserving and restoring Saddlery and leather articles. Not suitable for suede.

473 ml  
946 ml  
3.79 l

### Foaming Liquid Glycerine Saddle Soap

Gives a creamy foam for easy application

150ml



Hoof Dressing



Equine Show Pack



Leather Show Pack



Detangle & Shine



4-Way Care



Neatsfoot Oil

Sizes for Metal Bits are shown as a guide to standard stock. Please ask if other sizes are required.

The maximum size for a Rubber or Vulcanite bit is 6" (15.0cm)

**BITS**

**British Made**



## Bit Families What Is a Bit?

Bits are for controlling the speed of the horse, containing the impulsion created by the rider's seat and leg, for turning and stopping. Some bits are good at one and not as good at others. Riders often expect too much of bits, thinking immediately that a Horse that is difficult to stop or turn must have a biting problem. There are a lot of other things to be taken into consideration. Out of all the pieces of equipment that we use on our Horses the Bit is a major source of control so it is vital that you choose a good quality well designed and balanced Bit that will be strong in structure and not break, that allows your Horse to be comfortable and gives you the right signals and degree of control. Buying a Saddle for £1200 and a Bit for £19.99 just does not make sense when you consider how much we rely on the Bit to keep us safe.

The Horse's tongue fills the whole of the inside of its mouth and the top of the tongue touches the roof of the mouth so there is no space for a Bit to go whatever Bit you put in your Horse's mouth has to fit between the tongue and the roof. The tongue is also a massive muscle we only tend to see the part of it that is in the lower jaw but it is actually three times as long.

### The Snaffle

It will depend on what mouthpiece is chosen as to the action of the Bit.

#### *Mouthpieces:*

*Jointed:* if the Snaffle has a jointed mouthpiece, whether single or double jointed the action is a closing one so as rein pressure is applied the branches of the Bit collapse in at the sides of the mouth and squeeze the tongue and outer Bars of the mouth between the two branches pushing the tongue forward into the shape that the Bit has now collapsed to, applying pressure to the sides of the tongue the corners of the lips, the sides of the lips, and the sides of the lower jaw..

*Mullen:* the solid mouthpieces such as Mullen does not collapse in the mouth and places even pressure straight across the tongue pulling the tongue evenly down into the lower jaw and onto the Bars of the mouth.

*Ported:* a Ported mouthpiece allows the tongue to scoop forward into the ported space in the centre of the Bit taking pressure off the very middle of the tongue and distributing more pressure onto the sides of the tongue and the Bars of the mouth. Remember with a Port the Bit is always pulled down into the lower jaw so the space that you have to work with is from the bottom Bar into the roof of the mouth and on most Horses that distance is at least an inch to and inch and a quarter.

#### *Cheekpieces:*

*Loose:* Loose Rings are just as the name suggests loose so good while you are starting to train but as the Horse moves forward in its education not a really slick signal as you need the signals to improve and refine with your Horses training. As you apply rein pressure the rein rolls on the cheek the cheek rolls on the mouthpiece and then the signal gets to the Horse. Makes a good cheek as a Bradoon but not always as a stand alone Bit. You have to be careful of the fitting as where the cheek joins the mouthpiece can easily rub the corners of the lips.

*Eggbutt:* Automatically improves the signal between the Horse and Rider as there is less play between the rein and the mouth. Comfortable for the corners of the lips as there is not gap between the mouth and the cheek to catch a lip.

*Hanging:* Again improves the signals from Rider to Horse and because the cheek of your Bridle is placed into a small ring the Bit sits up neatly in the Horses mouth and some of the weight of the Bit is taken onto the Bridle and out of the mouth. You also get more directional support to your signals. No Poll pressure is applied as some people seem to think.

*Full:* there are a variety of Full and Half cheeks which basically are more comfortable to the corner of the lips neaten the signal from Rider to Horse a give a little directional support.

### The Gag

Gag is a term that can be used for a variety of Bits but the traditional Gags are really the Balding the Cheltenham and the Duncan all of which have either a Leather or a Rope Gag cheek piece running through the cheek of the Bit. The action is as the reins are used the Gag cheek slides through the cheek of the cheek piece pulling the Bit





## BITS

### British Made

Sizes for Metal Bits are shown as a guide to standard stock. Please ask if other sizes are required.

The maximum size for a Rubber or Vulcanite bit is 6" (15.0cm)

upwards in the mouth and acting on the corners of the lips and the upper parts of the mouth just in front of the molar teeth. The Gag is designed to be used with two reins one on the Gag cheek and one on the Bit ring itself so that the Rider can alternate between a Snaffle action and Leverage action.

### The Double Bridle

The whole point of choosing to use a Double Bridle should be for refinement and definition. It is a way of getting much clearer rein signals by using two completely different Bits. The Bradoon, as it is the only jointed Bit has the best turning signal and gives the Horse a lift to its frame, but does not have a stop or a signal for the Horse to maintain its frame. The Weymouth if it has a Port or Curve that the Horse is comfortable with, allows it out into the Bit, sends the Horse to the end of the rein gives you your degree of Head tip and is your brakes and way of transferring weight back, as long as you set your curb chain correctly so that the three actions of the Weymouth, downward mouth pressure, poll pressure and curb pressure are evenly balanced.

### The Pelham

Is a way of having only one Bit in the Horses mouth and being able to ride with two reins. Particularly useful in the Showing World where Ponies and Horses have only one season as a Novice and then have to go into Doubles or Pelhams for their second season. The Pelham only works well ridden with two reins if you use one with Pelham Roundings you lose the use of any leverage or the balance of a chain. As you use the top rein the Bit simply gets pulled back onto the Horses mouth very like the action of a hanging cheek. As you use the bottom rein the cheek of the Bit turns applying downward mouth pressure. Poll pressure which should all be balanced out by a well set chain so that just like the Weymouth the three pressures are even.

### Leverage Bits

The Four Ring bit, known by a variety of names most notably the Dutch gag, is included in this section as well as the American Gag and the Elevator as they are all leverage Bits that normally do not employ the use of a curb strap or chain. As you apply rein pressure depending on where you have your rein set the cheek of the Bit turns to almost horizontal especially in the case of the 4 Ring and American Gag if the mouthpiece is jointed the Bits mouthpiece collapses in on the inside of the mouth and then as the cheek continues to turn the mouthpiece rotates down into the mouth. Bits designed to encourage the Horse to yield quickly from the pressure and lighten in the Bridle which works as long as the Rider spots the yield and lightens the hands accordingly.

These notes on bit action are provided as a guide only and do not imply that a particular bit will always have the same effect on every horse. Abbey Bits take no responsibility for the use of any bit detailed in this document and make no claim as to their suitability for any use whatsoever.

### Materials and Construction

The components for Abbey bits are manufactured from castings using the "lost wax" technique that produces a much finer detail and finish than the traditional sand cast steel. Where unusual parts are required they are fabricated by hand in our workshops using high quality steel bar.

Stainless Steel is considered to be a "Cold" metal for the horse but this is frequently outweighed by its other properties of strength, durability and low maintenance.

**Copper** is a "warm metal that encourages salivation in many horses. For this reason it has been incorporated into a number of alloys used to make bits. However, it is not a strong metal to use in isolation except in certain circumstances. A number of abbey bits are available with copper either as an entire mouthpiece, as rollers or as an insert in a stainless steel mouth. This latter option provides the positive qualities of copper with the strength of steel on the load bearing areas.



Figure 1 Fused Copper / Steel Joint



Sizes for Metal Bits are shown as a guide to standard stock. Please ask if other sizes are required.

The maximum size for a Rubber or Vulcanite bit is 6" (15.0cm)

## BITS

British Made



Copper links can also be used to provide copper content in a bit. The link still has a stainless insert where it joins the mouthpiece to provide strength on the load bearing area.



Figure 2 Copper French Link

Copper Rollers provide a third way of incorporating the metal into a stainless bit. These can be the large Cherry Rollers, flat Rollers or built into a link:-



Figure 3 Cherry Roller



Figure 4 Flat Roller



Figure 5 Copper Ball Link

**Iron or Sweet Metal** is another finish enjoying a resurgence in popularity. This traditional material produces a "sweet" taste to the horse and, before stainless steel, was a common material in bit manufacture. However, it loses out cosmetically as a rusty bit does not seem very appealing to the buyer. Like copper, iron can now be inserted into a stainless bit to produce a combination of strength and "sweetness" for the horse.



Figure 6 Sweet Iron Insert

**Vulcanite** is a hard plastic type material giving a firm but "warm" feel. It is also normally quite thick so that the effect is to produce a gentle bit in a firm material built over a metal bar for strength.

Rubber produces a similar effect to Vulcanite but has a softer feel. It can, also, be used to make flexible bits by moulding it over a strong steel chain rather than a solid metal bar.

Both Vulcanite and Rubber can be produced in Mullen or Jointed mouths or with French links to modify the nutcracker action of the joint. The maximum size of a rubber or vulcanite bit is currently 6 inches (15cm).

**Curb Chains** are supplied with all bits requiring them: Pelhams and Driving Bits. Chains supplied are normally Nickel plated steel but Stainless Steel is available on request. Single chains are available in pony, cob and full size whilst doubles are also available in extra long. Flat Polo chains and Brass chains are available at extra cost.



Figure 7 Single & Double Link Curb Chains

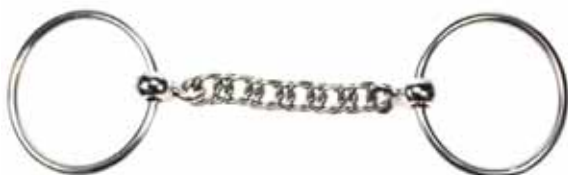


## BITS

British Made

Sizes for Metal Bits are shown as a guide to standard stock. Please ask if other sizes are required.

The maximum size for a Rubber or Vulcanite bit is 6" (15.0cm)



### Curb Chain Bit

Multi-Jointed chain mouthpiece stopping the horse from clamping onto the bit as the bit moves in the mouth. Only to be recommended to the experienced rider.

5" - 6" (12.5cm - 15.0cm)

Also available with two single link chains



### Thick Mouth Loose Ring

Often known as a Hollow Mouth Loose Ring though this pattern is heavy weight. The thick mouth idea is from the German School and is considered to be gentle but can take up a lot of room in some mouths.

5" - 6½" (12.5cm - 16.0cm) - Available in Copper



### Anti Lug Bit

This bit has the central joint offset to one side giving a displaced nutcracker action either to the left or to the right.

5" - 5½" (12.5cm - 14.0cm)



### Triangular Mouth Jointed Snaffle

The thin mouth combines with the three edges combine to make this a severe bit which has the added nutcracker effect of the single joint. Use with caution.

5¼", 5½" (12.0cm - 14.0cm)



### Irish Bradoon

The Loose Ring snaffle at it simplest with a straight forward squeezing action as the branches of the bit close on primarily the tongue.

4" - 7" (10.0cm - 17.5cm)



### French Mouth Snaffle

This bit incorporates a small link in the middle of the mouthpiece allowing for more tongue room in the middle of the bit and less of a close and pinch for the horse

4" - 7" (10.0cm - 17.5cm)



### Irish, Copper Mouth

The Loose Ring snaffle at it simplest with a straight forward squeezing action as the branches of the bit close on primarily the tongue. Copper aids salivation.

4½" - 6" (11.5cm - 15.0cm)



### French Mouth Snaffle, Copper Link

This bit incorporates a small link in the middle of the mouthpiece allowing for more tongue room in the middle of the bit and less of a close and pinch for the horse.

Copper link aids salivation.  
4½" - 5½" (11.5cm - 14.0cm)

Sizes for Metal Bits are shown as a guide to standard stock. Please ask if other sizes are required.

The maximum size for a Rubber or Vulcanite bit is 6" (15.0cm)

## BITS

British Made



### Thin Mouth French Loose Ring

This bit incorporates a small link in the middle of the mouthpiece allowing for more tongue room in the middle of the bit and less of a close and pinch for the horse. Thin mouth increases pressure on lips.

**5" - 5½" (12.5cm - 14.0cm)**



### Copper Nut Loose Ring

Copper Nut on this bit encourage play, and link allows more tongue room in the middle of the bit and less of a close and pinch for the horse

**5" - 5¾" (12.5cm - 15.0cm)**



### Thick Mouth French Loose Ring

This bit incorporates a small link in the middle of the mouthpiece allowing for more tongue room in the middle of the bit and less of a close and pinch for the horse

**5" - 5½" (12.5cm - 14.0cm)**



### Egerton Snaffle

Copper Roller on this bit encourage play, and link allows more tongue room in the middle of the bit and less of a close and pinch for the horse

**5" - 5¾" (12.5cm - 15.0cm)**



### Copper Roller Egerton Loose Ring

Rollers on this bit encourage play, and mouthing helps with horses which take hold of the mouthpiece for it simply rolls away. Copper encourages salivation

**5" - 5¾" (10.0cm - 17.5cm)**



### Arch Link Loose Ring

This bit incorporates a small link in the middle of the mouthpiece allowing for more tongue room in the middle of the bit and less of a close and pinch for the horse

**5" - 5½" (12.5cm - 14.0cm)**



### Dr Bristol Loose Ring

The plate in the centre of a Dr. Bristol is flatter and thicker than that of a French Link and is angled so that as the reins are used the edge of the plate pushes across the centre of the tongue asking for an instant yield to pressure

**4½" - 6" (11.5cm - 15.0cm)**

**Also Available with a Copper Plate**



### Slow Twist Egerton Snaffle

This bit incorporates a small link in the middle of the mouthpiece allowing for more tongue room in the middle of the bit and less of a close and pinch for the horse.

**Copper link aids salivation. Twist is sharp on the bars.**

**5" - 5¾" (12.5cm - 15.0cm)**



## BITS

British Made

Sizes for Metal Bits are shown as a guide to standard stock. Please ask if other sizes are required.

The maximum size for a Rubber or Vulcanite bit is 6" (15.0cm)



### Copper Ball Link Snaffle

This bit incorporates a small link in the middle of the mouthpiece allowing for more tongue room in the middle of the bit and less of a close and pinch for the horse whilst the roller encourages play

5" - 5<sup>3</sup>/<sub>4</sub>" (10.0cm - 17.5cm)



### Vulcanite Jointed French Loose Ring

This is a loose ring French Link Bit with the mouthpiece covered in soft rubber so has the same action as a Loose Ring French Link Snaffle but the mouthpiece is softened by the rubber covering. For some horses with small mouths this can make the bit bulky

5" - 6" (12.5cm - 15.0cm)



### Segundo Jointed Loose Ring

5" - 5<sup>3</sup>/<sub>4</sub>" (10.0cm - 14.5cm)

Also Available with a Straight Segundo Mouth



### Mullen Mouth Bradoon

Mullen mouth has no collapse and pinch like some of the jointed snaffles, acting only on the corners and tongue.

3" - 6" (7.5cm - 15.0cm)



### Flat Plate Jointed Loose Ring

5" - 5<sup>1</sup>/<sub>2</sub>" (12.5cm - 14.0cm)



### Tapered Mouth Snaffle

Often known as a Hollow Mouth Loose Ring though this pattern is heavy weight. The thick mouth idea is from the German School and is considered to be gentle but can take up a lot of room in some mouths.

5" - 5<sup>1</sup>/<sub>2</sub>" (12.5cm - 14.0cm)



### Rubber Jointed French Loose Ring

This is a loose ring French Link Bit with the mouthpiece covered in soft rubber so has the same action as a Loose Ring French Link Snaffle but the mouthpiece is softened by the rubber covering. For some horses with small mouths this can make the bit bulky

5" - 6" (12.5cm - 15.0cm)



### Barmouth Loose Ring (Stallion)

Simple bit acting on the corners of the mouth and straight across the tongue - two separate actions as the mouth is reversible, with barred serrations on one side only. Can be plain on both sides of mouthpiece.

3" - 7" (7.5cm - 17.5cm)



Sizes for Metal Bits are shown as a guide to standard stock. Please ask if other sizes are required.

The maximum size for a Rubber or Vulcanite bit is 6" (15.0cm)

## BITS

British Made



### Plain Mouth Stallion

Simple bit acting on the corners of the mouth and straight across the tongue.

3" - 5½" (7.5cm - 14.0cm)



### Vulcanite Jointed Loose Ring

Similar to the Irish but is Rubber or Vulcanite covered, making this bit much milder, cushioning the bars of the mouth. Also making the bit very bulky for those horses with small mouths or large tongues

4" - 6" (10.0cm - 15.0cm)



### Barmouth Breaking Loose Ring

A solid loose ring version of the jointed keyed bit, with no pinch or collapse for a milder effect. It is supposed to encourage interest and mouthing. All formative training should prepare the Horse for its ridden work so to encourage it to constantly mouth and play with a bit is probably not a good idea

3" - 7" (7.5cm - 17.5cm)



### Vulcanite Mullen Loose Ring

Excellent first bit, very gentle action in either Rubber or Vulcanite. Can be very bulky for an Horse or Pony with a small mouth or large tongue.

4" - 6" (10.0cm - 15.0cm)

Also Available in Flexible Rubber or Rubber on Metal



### Jointed Breaking Loose Ring

The central ring carries three copper dangles this type of bit is generally accepted as a Breaking Bit. It is supposed to encourage interest and mouthing. All formative training should prepare the horse for its ridden work so to encourage it to constantly mouth and play with a bit is probably not a good idea

4½" - 6" (11.5cm - 15.0cm)



### Port Mouth Loose Ring (Magic)

Having no joints in the middle of the bit and a small space for part of the tongue means this bit cannot collapse and pinch the tongue the action is straight across the mouth. acting on the tongue and the top of the lower lips.

4" - 6" (10.0cm - 15.0cm)

Also Available with a Medium Port



### Rubber Jointed Loose Ring

Similar to the Irish but is Rubber or Vulcanite covered, making this bit much milder, cushioning the bars of the mouth. Also making the bit very bulky for those horses with small mouths or large tongues

4" - 6" (10.0cm - 15.0cm)



### Cherry Roller Loose Ring

Rollers on this bit move under the horses' tongue as it reaches into the bit. The size of the rollers make this quite a bulky bit and as it is a single jointed bit can have rather a pinch to it in the wrong hands.

4½" - 6" (11.5cm - 15.0cm)

Also available with Copper Rollers



## BITS

British Made

Sizes for Metal Bits are shown as a guide to standard stock. Please ask if other sizes are required.

The maximum size for a Rubber or Vulcanite bit is 6" (15.0cm)



### Copper Roller Loose Ring

Rollers on this bit move under the horses' tongue as it reaches into the bit. The size of the rollers make this quite a thin bit and as it is a single jointed bit can have rather a pinch to it in the wrong hands.

5" - 5½" (12.5cm - 14.0cm)

Also Available with a French Link



### Dick Christian

The two side of the mouthpiece are joined in the middle with an oval loop which allows for more tongue room in the centre of the bit and means it cannot close as sharply as a single jointed bit.

5" - 6" (12.5cm - 15.0cm)



### Copper Windsucker Loose Ring

Fluted style of mouth prevents windsuckers from clamping onto the bit and drawing air, as it simply filters the air through. This makes the sucking of wind much harder. Not a Riding Bit used in the stable when the horse is not eating to help prevent wind sucking.

5" - 6" (10.0cm - 15.0cm)

Also Available in Stainless Steel



### Fast Twisted Irish

The nutcracker action and twisted mouthpiece create a sharp effect on sides of the bars and tongue. The fast - or cork-screw twist is slightly gentler than the sharper slow twist.

3" - 6" (7.5cm - 15.0cm)



### Nagbutt Loose Ring

Designed for the horse which puts its tongue over the bit - the plate lies upwards to the back of the throat holding the tongue down in the lower jaw

4½" - 6" (11.5cm - 15.0cm)



### Single Twisted Wire Loose Ring

A very severe bit due to the very narrow twist, giving a sharp nutcracker action squeezing tongue and pressurising bars.

4½" - 6" (11.5cm - 15.0cm)

Also Available as a Double Twisted Wire



### Slow Twisted Irish

The nutcracker action and twisted mouthpiece create a sharp effect on sides of the bars and tongue.

4½" - 6" (11.5cm - 15.0cm)



### Mullen Overcheck

Very thin mouthpiece it would be a very severe action if it was used as a riding - this is normally used on a Trotting or a Carriage Horse as a small bit to carry and over head check and would sit in the mouth above the larger Bit that carries the reins

4½" - 5½" (11.5cm - 14.0cm)

Also Available Jointed



Sizes for Metal Bits are shown as a guide to standard stock. Please ask if other sizes are required.

The maximum size for a Rubber or Vulcanite bit is 6" (15.0cm)

## BITS

British Made



### Nylon In-Hand Showing Bit

Designed for showing, available in Straight or Mullen Mouths. Can have Brass or Stainless Steel rings  
3½" - 5½" (8.0cm - 14.0cm)



### Arab Bit Mullen Mouth

Designed for showing fine mouthed Arabians, thin stainless steel mouth with brass rings  
3" - 5½" (7.5cm - 14.0cm)  
Also Jointed as below



### "W" Mouth Loose Ring

The two single jointed actions fall in different places, making this a very severe bit, mainly pressurising the outsides of the bars and squeezing the tongue forward and upwards towards the roof of the mouth.

5" - 5½" (12.5cm - 14.0cm)

Also Available with Twisted Mouth below



### Lozenge Link Loose Ring

Similar in action to a French link, the extra bulk of the lozenge softens the effect

5" - 5½" (12.5cm - 14.0cm)



### Twisted Barry Mouth Loose Ring

A more severe version of the "W" mouth above  
4" - 6" (10.0cm - 15.0cm)



### Waterford Loose Ring

The idea behind this style of mouthpiece is that the mouthpiece is a series of large bobbles connected by large links. It is very moveable and as the horse reaches into the mouthpiece with its tongue the mouthpiece moves so there is nothing for the horse to really lean into plus the mouthpiece feels uneven this should make the horse lighten its feel on the bit and therefore lighten in the bridle.

4½" - 6½" (11.5cm - 16.0cm)

Also Available with Copper Rollers as below



### Hanoverian Loose Ring

The jointed port on this version of the Hanoverian mouthpiece asks for an instant yield. The horse finds it hard to take hold of the bit as the rollers move under the teeth. The high port gives space for the tongue.

5" - 5½" (12.5cm - 14.0cm)

Also available with Copper Rollers



### Copper Roller Waterford Loose Ring

4½" - 6" (11.5cm - 15.0cm)



## BITS

**British Made**

Sizes for Metal Bits are shown as a guide to standard stock. Please ask if other sizes are required.

The maximum size for a Rubber or Vulcanite bit is 6" (15.0cm)



### **Norton Perfection / Citation Bit (Racing)**

A severe bit used with a nosepiece which runs down the horses' face and buckles each side of the nose onto the small spoon shaped fixings on the bradoon part of the bit. This attachment applies pressure on the front of the nose when the rein pressure is applied. Both single jointed bits squeeze the tongue with a double nutcracker action.

**5" - 5½" (12.5cm - 14.0cm)**



### **Cheese grater / Bike Chain Loose Ring Bit**

A multi-jointed bit with a reversible action, one side smooth, one side severe. Probably one to hang on the wall in the bit collection rather than ride in.

**5½" (14.0cm) only**



### **Rockwell (Racing)**

The cheek pieces of the bridle attach to the small loops at the top of the cheek piece and not onto the large ring and the reins fasten conventionally onto the main ring of the Bit. As the reins are used the nutcracker action squeezes the tongue between the two branches of the mouthpiece and squashes the face between the two cheeks of the Bit.

**5" - 5½" (12.5cm - 14.0cm)**



### **Tom Bit**

The central joint is made so that it cannot completely close like a conventional single jointed Snaffle mouthpiece.

**5" - 6" (12.5cm - 15.0cm)**



### **Captain Sandy (Racing)**

Controls the direction of the horse left or right by the sliding action of the main bit in a hollow tube that has two fixed rings attached to the bridle. A Bit designed for the Trotting and Pacing Tracks used in conjunction with an overhead check.

**5½" (14.0cm)**



### **James Bit**

**5" - 5½" (12.5cm - 14.0cm)**



### **Figure 8 Jointed Loose Ring**

The rotating figure of eight keeps the tongue firmly pressed into the lower jaw.

**5" - 5¾" (12.5cm - 14.5cm)**

**Also Available as a Barmouth.**



### **Scourrier / Cornish Snaffle**

This Bit can be worn both ways either with the serrated side to the mouth or the smooth side and has a squared mouthpiece. The cheek pieces of the bridle attach to the inner bit rings and the reins attach to the outer rings.

**3" - 7" (7.5cm - 17.5cm)**

Sizes for Metal Bits are shown as a guide to standard stock. Please ask if other sizes are required.

The maximum size for a Rubber or Vulcanite bit is 6" (15.0cm)

## BITS

British Made



### Magennis Loose Ring

Used widely in hunting. The square edged mouthpiece coupled with the copper rollers in the middle act sharply on the sides of the tongue and the outside of the lower jaws and lips.

**5¼" - 5¾" (13.0cm - 14.5cm)**

**Also Available with stainless steel rollers as below**



**Other Loose Ring bits in our range include the following:**

Shrewsbury Snaffle	5", 5½"	(12.5cm, 14.0cm)
Fast Twist Copper Link Snaffle	5" - 5¾"	(12.5cm - 14.5cm)
Slow Twist Copper Link Snaffle	5" - 5¾"	(12.5cm - 14.5cm)
Copper Ball Link Roller Snaffle	5" - 5¾"	(12.5cm - 14.5cm)
Port Mouth Vulcanite Loose Ring	5", 5½"	(12.5cm, 14.0cm)
Copper Roller Port Mouth Snaffle	5" - 5½"	(12.5cm - 14.0cm)
Rubber Mullen Snaffle - Brass Rings	5", 5½"	(12.5cm, 14.0cm)
Thick Lozenge Snaffle	5" - 5½"	(12.5cm - 14.0cm)



## BITS

British Made

Sizes for Metal Bits are shown as a guide to standard stock. Please ask if other sizes are required.

The maximum size for a Rubber or Vulcanite bit is 6" (15.0cm)



### Standard Weight Eggbutt

The Eggbutt has a more defined action as there is no play between the mouthpiece and the cheek piece, and is more comfortable for the corner of the lip as there is no gap between the mouthpiece and the cheek. The single jointed mouth has the same action as any single joint with out leverage

4" - 6½" (10.0cm - 16.0cm)



### Dressage Eggbutt

A slim jointed eggbutt bradoon suitable for use with any type of curb bit.

4" - 6½" (10.0cm - 16.0cm)



### Light Weight Eggbutt

This version of Eggbutt single joint is light and small for either use as a light slender bit for a small pony mouth or as the bradoon of a Double Bridle.

3" - 5" (7.5cm - 12.5cm)



### French Mouth Eggbutt

Eggbutt with a French Link mouthpiece where the central link allows the horse more space in the centre of the tongue the Eggbutt style cheek gives a more direct action than the loose ring.

4" - 7" (10.0cm - 17.5cm)



### French Mouth Dressage Eggbutt

Eggbutt with a French Link mouthpiece where the central link allows the horse more space in the centre of the tongue the Eggbutt style cheek gives a more direct action than the loose ring.

5" - 6" (12.5cm - 15.0cm)



### Eggbutt with Copper French Link

Eggbutt with a French Link mouthpiece where the central link allows the horse more space in the centre of the tongue the Eggbutt style cheek gives a more direct action than the loose ring. The copper link encourages salivation.

5", 5½" (12.5cm, 14.0cm)



### Rubber Eggbutt with French Link

As with most rubber covered bits, this is a proper bit covered with a safe depth of rubber. Rubber can soften the feel of the bit for the horse but can also bulk out the bit for horses with not much room inside the mouth

4½" - 6" (11.5cm - 15.0cm)

Also Available in Vulcanite



### Dr. Bristol Eggbutt

The oblong plate is fixed at an angle. When pressure is exerted, the side of the plate digs down onto the tongue - the longer the plate, the more severe the action as the joints can touch down and damage the bars of the mouth. Our normal plate is approx. 2" / 5cm long, but we do use a 2.5" / 6.3cm plate.

4" - 6½" (10.0cm - 16.0cm)

Sizes for Metal Bits are shown as a guide to standard stock. Please ask if other sizes are required.

The maximum size for a Rubber or Vulcanite bit is 6" (15.0cm)

## BITS

British Made



### Copper Ball Link Eggbutt

Similar in action to the French link with the added attraction of the copper ball to encourage salivation and play.

5" - 5½" (12.5cm - 14.5cm)

Also Available with a Copper Nut Link



### Sweet Iron Eggbutt

Standard weight Eggbutt with sweet iron mouth.

5" - 5½" (12.5cm - 14.0cm)

Also Available in Copper



### Egerton Link Eggbutt

Similar in action to the French link with the added attraction of the large slotted copper roller to encourage salivation and play.

5" - 5¾" (12.5cm - 14.5cm)



### Mullen Mouth Eggbutt

Mullen Mouthpieces are smooth and spread the action evenly across the whole of the middle of the tongue providing very good front to back signalling but not as an efficient turn to your signals

3" - 6" (7.5cm - 15.0cm)



### Copper Roller Egerton Eggbutt

Rollers on this bit move under the horses' tongue as it reaches into the bit. The size of the rollers make this quite a bulky bit. The Copper Egerton roller eases the nutcracker effect.

5" - 5½" (12.5cm - 14.0cm)



### Vulcanite Port Mouth Eggbutt

Quite a bulky bit but provides gentle pressure and space for the tongue

5" - 5½" (12.5cm - 14.0cm)

This bit is also available in a standard metal mouth with a low or medium port



### Copper Roller Port Mouth Eggbutt

Rollers on this bit move under the horses' tongue as it reaches into the bit. The size of the rollers make this quite a bulky bit. The port provides more space for the tongue

5" - 5¾" (12.5cm - 14.5cm)



### Segundo Eggbutt

5" - 5½" (12.5cm - 14.0cm)

Also Available as a Jointed Segundo.





## BITS

British Made

Sizes for Metal Bits are shown as a guide to standard stock. Please ask if other sizes are required.

The maximum size for a Rubber or Vulcanite bit is 6" (15.0cm)



### Rubber Jointed Eggbutt

As with most rubber covered bits, this is a proper bit covered with a safe depth of rubber. Rubber can soften the feel of the bit for the horse but can also bulk out the bit for horses with not much room inside the mouth

4" - 5¾" (10.0cm - 14.5cm)



### Rubber Mullen Eggbutt

Excellent first bit, very gentle action. Can be very bulky for an horse or pony with a small mouth or large tongue.

4½" - 5¾" (11.5cm - 14.5cm)



### Vulcanite Jointed Eggbutt

As with most covered bits, this is a metal bit covered with a safe depth of Vulcanite. Vulcanite is firmer than rubber but warmer for the horse. It can also bulk out the bit for horses with not much room inside the mouth

4" - 5¾" (10.0cm - 14.5cm)



### Vulcanite Mullen Eggbutt

Excellent first bit, very gentle action. Slightly firmer than rubber. Can be very bulky for an horse or pony with a small mouth or large tongue.

4½" - 5¾" (11.5cm - 14.5cm)



### Slow Twisted Eggbutt

The nutcracker action and twisted mouthpiece create a sharp effect on sides of the bars and tongue.

4½" - 6" (11.5cm - 15.0cm)



### Fast Twisted Eggbutt

The nutcracker action and twisted mouthpiece create a sharp effect on sides of the bars and tongue. The faster twist and thinner mouth make this a more severe bit.

4½" - 6" (11.5cm - 15.0cm)



### Hanoverian Eggbutt

The jointed port on this version of the Hanovarian mouthpiece asks for an instant yield. The horse finds it hard to take hold of the bit as the rollers move under the teeth. The high port gives space for the tongue.

5" , 5½" (12.5cm, 14.0cm)

Also Available with Copper Rollers



### Waterford Eggbutt

The Waterford mouthpiece is a series of bobbles and joints which is very moveable so it helps to stop the Horse reaching into the bit and resting on it or taking a strong feel.

5" , 5½" (12.5cm, 14.0cm)



Sizes for Metal Bits are shown as a guide to standard stock. Please ask if other sizes are required.

The maximum size for a Rubber or Vulcanite bit is 6" (15.0cm)

## BITS

British Made



### Copper Ball Link Eggbutt

Similar in action to the French link with the added attraction of the copper ball to encourage salivation and play.

**5" - 5¾" (12.5cm - 14.5cm)**

**Also Available with a Copper Nut Link**



### Nagbutt Eggbutt

Designed for the horse which puts its tongue over the bit - the plate lies upwards to the back of the throat holding the tongue down in the lower jaw

**5" - 5¾" (12.5cm - 14.5cm)**



### Magennis Eggbutt

Used widely in hunting. The square edged mouthpiece coupled with the copper rollers in the middle act sharply on the sides of the tongue and the outside of the lower jaws and lips.

**5¼", 5½" (13.0cm - 14.5cm)**

**Also Available with Stainless Steel Rollers**

### Other Eggbutt bits in our range include the following:

Twisted, Copper Link Eggbutt	5" - 5¾"	(12.5cm - 14.5cm)
Thick Mouth Eggbutt	3", 5½"	(7.5cm, 14.0cm)
Cherry Roller Eggbutt	5", 5½"	(12.5cm, 14.0cm)
Copper Cherry Roller Eggbutt	5", 5½"	(12.5cm, 14.0cm)
Coscoquero Eggbutt	5", 5½"	(12.5cm, 14.0cm)
Windsucker Jointed Eggbutt	5" - 5½"	(12.5cm - 14.0cm)
Flat Jointed Eggbutt	5" - 5¾"	(12.5cm - 14.5cm)



## BITS

British Made

Sizes for Metal Bits are shown as a guide to standard stock. Please ask if other sizes are required.

The maximum size for a Rubber or Vulcanite bit is 6" (15.0cm)



### Myers Dee Race Snaffle

The Myer's D cheek is very straight against each side of the face helping to give a little directional support for the turning signal and as the mouthpiece is firmly attached to the cheek is smooth against the corners of the lips.

**4" - 5½" (10.0cm - 14.0cm)**

Also Available with a Sweet Metal Mouth



### French Mouth Dee Cheek

French link allows for more room for the tongue in the centre of the bit and the mouthpiece closes in a sort of U shape inside the Horses mouth instead of the triangular shape of a single jointed bit.

**3¾" - 5½" (9.5cm - 14.0cm)**



### Thick Mouth Dee Cheek

A thick, heavy mouth reducing pressure on the bars whilst retaining the nutcracker action over the tongue

**5", 5½" (12.5cm, 14.0cm)**



### Copper Roller Lozenge Link Dee

Rollers on this bit move under the horses' tongue as it reaches into the bit. The size of the rollers make this quite a thin bit and the lozenge allows room for the tongue

**5", 5½" (12.5cm, 14.0cm)**



### Waterford Dee Cheek

The Waterford mouthpiece is a series of bobbles and joints which is very moveable so it helps to stop the horse reaching into the bit and resting on it or taking a strong feel.

**5", 5½" (12.5cm, 14.0cm)**

Also Available as a Copper Roller Waterford



### Dr. Bristol Dee Cheek

The angled Dr. Bristol plate means that unlike the French Link which the whole of the plate lies on the middle of the Horses tongue the edge of the Dr Bristol lies across the middle of the tongue getting the Horse to yield to the pressure much faster.

**4" - 6" (10.0cm - 15.0cm)**



### Mullen Mouth Dee Cheek

If your horse has clearly indicated that it does not really like any sort of jointed bit then to go for a slender mullen shape means that there is a smooth even feel all across the tongue and no collapse or pinch to the mouthpiece.

**4½" - 5½" (11.5cm - 14.0cm)**



### Rubber Jointed Dee Cheek

The rubber tends to bulk out the mouthpiece so may not be a suitable for Horses with really bulky tongues or small mouths.

**4" - 6" (10.0cm - 15.0cm)**

Sizes for Metal Bits are shown as a guide to standard stock. Please ask if other sizes are required.

The maximum size for a Rubber or Vulcanite bit is 6" (15.0cm)

## BITS

British Made



### Vulcanite Jointed Dee Cheek

The Vulcanite tends to bulk out the mouthpiece so may not be a suitable for Horses with really bulky tongues or small mouths.

4" - 6" (10.0cm - 15.0cm)



### Vulcanite French Link Dee Cheek

The thick vulcanite can soften the feel of the bit for the horse but can also bulk out the bit for horses with not much room inside the mouth

5" - 5½" (12.5cm - 14.0cm)



### Rubber Mullen Dee Cheek

If a rubber mouthpiece bends it is termed flexible rubber which means there is a small chain or steel hauser running through the centre of the bit for safety and strength, and then the bit is covered with a rubber shape. If it is not flexible then it is termed rubber covered which means it is in this case a slim mullen stainless snaffle under a rubber covering.

4" - 5¾" (10.0cm - 14.5cm)



### Copper Roller Dee Cheek

Rollers on this bit move under the horses' tongue as it reaches into the bit. The size of the rollers make this quite a thin bit and as it is a single jointed bit can have rather a pinch to it in the wrong hands.

4" - 6" (10.0cm - 15.0cm)



### Vulcanite Mullen Dee Cheek

Excellent first bit, very gentle action. Slightly firmer than rubber. Can be very bulky for an horse or pony with a small mouth or large tongue.

5", 5½" (12.5cm, 14.0cm)



### Copper Windsucker Dee Cheek

Fluted style of mouth prevents windsuckers from clamping onto the bit and drawing air, as it simply filters the air through. This makes the sucking of wind much harder.

5" - 5½" (12.5cm - 14.0cm)

Also Available with a Stainless Steel mouth



### Vulcanite Port Mouth Dee Cheek

Quite a bulky bit but provides gentle pressure and space for the tongue

5", 5½" (12.5cm, 14.0cm)



### Fast Twist Dee Cheek

The nutcracker action and the thin, twisted mouthpiece create a particularly sharp effect on sides of the bars and tongue

5" - 5½" (12.5cm - 14.0cm)

Also Available as a thicker Slow Twist



## BITS

British Made

Sizes for Metal Bits are shown as a guide to standard stock. Please ask if other sizes are required.

The maximum size for a Rubber or Vulcanite bit is 6" (15.0cm)



### Segundo Jointed Dee Cheek

The stability of the cheeks combine with the segundo port allowing room for the horse's tongue. Available with a tight (illustrated) or open port.

**5" - 5¾" (12.5cm - 14.5cm)**



### "W" Mouth Dee Cheek

Quite a severe but with the offset double nutcracker action mainly pressurising the outsides of the bars and squeezing the tongue forward and upwards towards the roof of the mouth.

**5", 5½" (12.5cm, 14.0cm)**

**Other Dee Cheek bits in our range include the following:**

Hunt Weight Jointed Dee Cheek	5½"	(14.5cm)
Cherry Roller Dee Cheek	5", 5½"	(12.5cm, 14.0cm)
Copper Cherry Roller Dee Cheek	5", 5½"	(12.5cm, 14.0cm)
Rubber Loller Dee Cheek	5", 5½"	(12.5cm, 14.0cm)
Jointed Breaking Dee Cheek	5" - 5½"	(12.5cm - 14.0cm)



### Fulmer

Effectively a Full Cheek Single Jointed Bit but with a loose ring instead of the rein ring being joined solidly onto the full cheek which means there is a little delay in the rein pick up and the signal getting to the horse. A bit that is best used with Bit Keepers to sit it up in the horse's mouth.

**4" - 6" (10.0cm - 15.0cm)**



### French Mouth Fulmer

The Fulmer Snaffle is a Full Cheek Bit but with a loose ring instead of the rein ring being joined solidly onto the full cheek which means there is a little delay in the rein pick up and the signal getting to the horse. A bit that is best used with Bit Keepers to sit it up in the Horses mouth. The nutcracker action softened by the French link

**5" - 6" (12.5cm - 15.0cm)**

Sizes for Metal Bits are shown as a guide to standard stock. Please ask if other sizes are required.

The maximum size for a Rubber or Vulcanite bit is 6" (15.0cm)

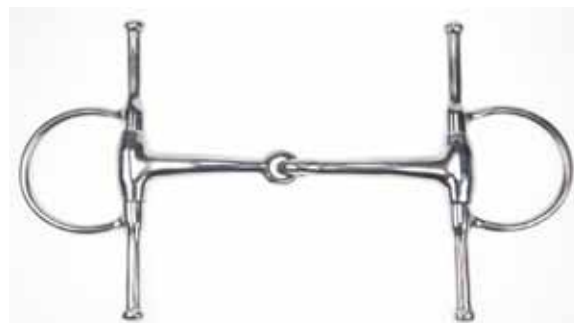
## BITS

British Made



### Full Cheek

Full Cheek helps to give a certain amount of directional support and as with all full cheeked bits realises its full potential if used with bit keepers from the top of the cheek to the cheek piece of the bridle to sit the bit up in the mouth.  
**5" - 6" (12.5cm - 15.0cm)**



### Full Cheek Eggbutt

The full cheek helps with directional support - the eggbutt cheek makes for a comfortable feel at the corners of the mouth and French link spreads the action from the very centre of the tongue  
**4" - 6" (10.0cm - 15.0cm)**



### French Mouth Full Cheek

The plate in centre of the bit spreads the action of the mouthpiece over a wider central area of the horse's tongue.  
**4" - 6" (10.0cm - 15.0cm)**



### Thick Mouth Full Cheek

A thick, heavy mouth reducing pressure on the bars whilst retaining the nutcracker action over the tongue  
**5", 5½" (12.5cm, 14.0cm)**  
**Also Available with a French Link**



### Dr. Bristol Full Cheek

This Dr Bristol plate is very long to give a severe feel right across the middle of the tongue as the edge of the plate sinks into it.  
**5", 5½" (12.5cm, 14.0cm)**



### Slow Twisted Full Cheek with French Link

The nutcracker action and the twisted mouthpiece create a particularly sharp effect on sides of the bars and tongue, alleviated only by the French link  
**5" - 5½" (12.5cm - 14.0cm)**  
**Also Available as a Dr. Bristol**





## BITS

British Made

Sizes for Metal Bits are shown as a guide to standard stock. Please ask if other sizes are required.

The maximum size for a Rubber or Vulcanite bit is 6" (15.0cm)



### Copper Ball Link Full Cheek

Similar in action to the French link with the added attraction of the copper ball to encourage salivation and play and cheeks for directional stability

5", 5½" (12.5cm, 14.0cm)



### Segundo Full Cheek

Segundo was a Cavalry Officer with a passion for Schooling and for creating Bits. This mouthpiece was designed to allow the tongue to lie inside the port bringing the most of the action of the bit down on to the bars of the mouth.

5" - 5¾" (12.5cm - 14.5cm)



### Egerton Link Full Cheek

Similar in action to the French link with the added attraction of the large slotted copper roller to encourage salivation and play.

5", 5½" (12.5cm, 14.0cm)



### Vulcanite Jointed Full Cheek

A single jointed bit with a covering of Vulcanite. this can be quite thick for horses with small mouths or very fleshy mouths with thick tongues

4½" - 6" (11.5cm - 15.0cm)

Also Available in Rubber with or without a French Link



### Jointed Segundo Full Cheek

The stability of the cheeks combine with the segundo port allowing room for the horse's tongue. Available with an open (illustrated) or tight port.

5", 5½" (12.5cm, 14.0cm)



### Vulcanite Mullen Full Cheek

The vulcanite mouthpiece makes this much thicker than the metal mouthed bit and very gentle

4½" - 6" (11.5cm - 15.0cm)

Also Available in Flexible Rubber or Rubber on Metal



Sizes for Metal Bits are shown as a guide to standard stock. Please ask if other sizes are required.

The maximum size for a Rubber or Vulcanite bit is 6" (15.0cm)

## BITS

British Made



### Vulcanite Port Mouth Full Cheek

Quite a bulky bit but provides gentle pressure and space for the tongue with directional assistance through the cheeks  
5", 5½" (12.5cm, 14.0cm)



### Copper Cherry Roller Full Cheek

Rollers on this bit move under the horse's tongue as it reaches into the bit. The size of the rollers make this quite a bulky bit and as it is single jointed it can have rather a pinch to it in the wrong hands. The copper encourages salivation

4" - 6" (10.0cm - 15.0cm)

Also Available with Stainless Steel Rollers



### Jointed Breaking Full Cheek

The breaking keys are quite an old fashioned idea supposed to encourage a young horse to play with the bit. If it is to be a riding horse then perhaps this is not such a desirable trait to encourage

4½" - 6" (11.5cm - 15.0cm)



### Copper Waterford Full Cheek

The idea behind this style of mouthpiece is that the series of large bobbles connected by large links are very moveable and as the horse reaches into the mouthpiece with its tongue the mouthpiece moves so there is nothing for the horse to lean into. As it feels uneven this should make the horse lighten its feel on the bit and therefore lighten in the bridle.

5", 5½" (12.5cm, 14.0cm)



### Copper Roller Full Cheek

Has the attributes of a full cheek rollers on this bit move under the horse's tongue as it reaches into the bit. The size of the rollers make this quite a thin bit and as it is a single jointed bit can have rather a pinch to it in the wrong hands.

4½" - 5½" (11.5cm - 14.0cm)



### Curb Chain Full Cheek

Multi-Jointed chain mouthpiece stopping the horse from clamping onto the bit as the bit moves in the mouth.

Only to be recommended to the experienced rider.

5" - 5½" (12.5cm - 14.0cm)

Also Available with Two Single Link Chains



## BITS

British Made

Sizes for Metal Bits are shown as a guide to standard stock. Please ask if other sizes are required.

The maximum size for a Rubber or Vulcanite bit is 6" (15.0cm)



### Mullen Mouth Full Cheek

Mullen Full Cheek is a very useful mouthpiece to have for some of the younger horses that are tongue sensitive no joint in the middle means no collapse or pinch to the bit and the full cheek means it is comfortable to the corners of the lips and give good directional support.

4" - 5½" (10.0cm -14.0cm)



### Slow Twisted Copper Ball Link Full Cheek

This bit incorporates a small link in the middle of the mouthpiece allowing for more tongue room in the middle of the bit and less of a close and pinch for the horse. Copper link aids salivation. Twist is sharp on the bars.

5½" (14.5cm) only



### Slow Twist Full Cheek

Twisted mouth and the joint make this a severe bit. The twists dig into the sides of the tongue and the sides of the bars of the mouth and the single joint squeezes the tongue into a triangle

4½" - 6" (11.5cm - 15.0cm)



### Double Twisted Wire Full Cheek

The two single jointed actions fall in different places, making this a very severe bit, mainly pressurising the outsides of the bars and squeezing the tongue forward and upwards towards the roof of the mouth.

4½" - 6" (11.5cm - 15.0cm)

Also Available as a Single Twisted Wire



### Waterford Full Cheek

The linked mouthpiece is so moveable as the horse reaches into it with it tongue the mouthpiece moves and discourages the horse from leaning into the action. With all full cheeked bits they are best utilised with Bit Keepers as this supports the weight of the Bit in the mouth and gives clearer reins signals

4½" - 6½" (11.5cm - 16.0cm)



### Fast Twist Full Cheek

The nutcracker action and the thin, twisted mouthpiece create a particularly sharp effect on sides of the bars and tongue

4½" - 5½" (11.5cm, 14.0cm)

Sizes for Metal Bits are shown as a guide to standard stock. Please ask if other sizes are required.

The maximum size for a Rubber or Vulcanite bit is 6" (15.0cm)

## BITS

British Made



### Magennis Full Cheek

Used widely in hunting. The square edged mouthpiece coupled with the copper rollers in the middle act sharply on the sides of the tongue and the outside of the lower jaws and lips. Full cheeks give some directional control.

5¼", 5½" (13.0cm, 14.0cm)



### French Eggbutt Full Cheek

The full cheek helps with directional support - the eggbutt cheek makes for a comfortable feel at the corners of the mouth and French link spreads the action from the very centre of the tongue

4" - 5½" (10.0cm - 14.0cm)



### Nagbutt Full Cheek

The plate in the centre lies upwards towards the back of the mouth, pinning the tongue down into the jaw and preventing the tongue from coming over the bit. A last resort when all else has failed trying to find the reason why the horse is putting the tongue over the bit is a better course of action. Abbey has a variety of bits with mouthpieces that allow for more tongue room.

5", 5½" (12.5cm, 14.0cm)



### Jointed Segundo Full Cheek

The stability of the cheeks combine with the segundo port allowing room for the horse's tongue. Available with an open (illustrated) or tight port.

5" - 5¾" (12.5cm, 14.5cm)



### "W" Mouth Full Cheek

The two single jointed actions fall in different places, making this a severe bit, mainly pressurising the outsides of the bars and squeezing the tongue forward and upwards towards the roof of the mouth.

5", 5½" (12.5cm, 14.0cm)

Also Available with Twisted Mouth



### Flat Plate Jointed Full Cheek

Directional control from the cheeks. The angled plates act with a standard nutcracker action and the edge increases the severity. Reversing the bit reduces this somewhat.

5" - 5¾" (12.5cm - 14.5cm)



## BITS

British Made

Sizes for Metal Bits are shown as a guide to standard stock. Please ask if other sizes are required.

The maximum size for a Rubber or Vulcanite bit is 6" (15.0cm)



### Jointed Elevator

The Elevator with its long cheeks gives a lot of Leverage and actions the corners of the lips and the poll in a head raising sweep.

**5" - 5¾" (12.5cm, 14.5cm)**



### Waterford Elevator

The linked mouthpiece is so moveable as the horse reaches into it with its tongue the mouthpiece moves and discourages the horse from leaning into the action. The elongated cheeks provide a large amount of leverage acting on the poll.

**5", 5½" (12.5cm, 14.0cm)**



### Vulcanite Jointed Elevator

The Elevator with its long cheeks gives a lot of Leverage and actions the corners of the lips and the poll in a head raising sweep. The vulcanite reduces the pressure on the bars but increases the volume in the mouth

**5", 5½" (12.5cm, 14.5cm)**

Also Available in Rubber and with a Mullen Mouth



### Lozenge Link Elevator

Similar in action to a French link, the extra bulk of the lozenge softens the effect. The elongated cheeks provide a large amount of leverage acting on the poll.

**5", 5½" (12.5cm, 14.0cm)**

Also Available with a French Link

Sizes for Metal Bits are shown as a guide to standard stock. Please ask if other sizes are required.

The maximum size for a Rubber or Vulcanite bit is 6" (15.0cm)

## BITS

British Made



### Jointed Half Spoon

The half spooned bits were originally designed for the harness market. The spoons face downwards in order not to interfere with the overhead check or any part of the harness bridle.

**4" - 5½" (10.0cm - 14.0cm)**



### Vulcanite Mullen Half Spoon

Mullen mouth and half spoon cheeks make this a mild bit with the half spoon giving directional pressure. The bulk of the vulcanite reduces the pressure even more to provide a very gentle action.

**4" - 5½" (10.0cm - 14.0cm)**

**Also Available in Rubber**



### Mullen Mouth Half Spoon

Mullen mouth and half spoon cheeks make this a mild bit with the half spoon giving directional pressure.

**4" - 5½" (10.0cm, 14.0cm)**



### Jointed Full Spoon

The full spoon snaffle give directional support to the rein signal in a turn and stops the bit pulling through the mouth in harness racing.

**4" - 6" (10.0cm, 15.0cm)**



### Rubber Jointed Full Spoon

A half spoon rubber covered single jointed snaffle gentle on the bars and lips with the bite of the nutcracker joint action

**4½" - 5½" (11.5cm, 14.0cm)**

**Also Available in Vulcanite for a firmer feel**



### Vulcanite Mullen Full Spoon

Mullen mouth and full spoon cheeks make this a mild bit with the full spoon giving directional pressure. The bulk of the vulcanite reduces the pressure even more to provide a very gentle action.

**5", 5½" (12.5cm, 14.0cm)**

**Also Available in Rubber**





## BITS

British Made

Sizes for Metal Bits are shown as a guide to standard stock. Please ask if other sizes are required.

The maximum size for a Rubber or Vulcanite bit is 6" (15.0cm)



### Dexter Ring Bit

Originally designed for harness racing and had a strap attached from the bottom of the ring to the girth to keep the horses head down.

**5", 5½" (12.5cm, 14.0cm)**

**Also Available as Rubber Jointed**



### Dr. Bristol Hanging Cheek

The Dr. Bristol mouthpiece is a angled plate that gives an action straight across the middle of the tongue to ask the Horse for a very definite yeild.

**5", 5½" (12.5cm, 14.5cm)**



### Hanging Cheek - Filet Bouché

This hanging cheek supports the weight of the bit on the bridle, because you place the cheek of the bridle in the small top slot on the purchase. This gives you a clearer signal and more directional support. This small bradoon style of hanging cheek with a smaller rein ring does give a little poll pressure but only in a balance with the other pressures exerted when you use the reins. This pattern has a small cheek, ideal for use with small breeds and neat faces.

**4" - 6" (10.0cm - 15.0cm)**



### Waterford Hanging Cheek

The linked mouthpiece is so moveable as the horse reaches into it with it tongue the mouthpiece moves and discourages the horse from leaning into the action.

**4½" - 5½" (11.5cm - 14.5cm)**



### French Hanging Cheek

The hanging cheek is a very versatile cheek as it not only takes some of the weight of the bit off the horse's tongue but can also use an elastic or a leather curb behind the horse's jaw to take some of the pressure out of the mouth and onto the jaw.

**4" - 6" (10.0cm - 15.0cm)**



### Port Mouth Hanging Cheek

A hanging cheek with a port mouth allowing room across the middle for the tongue. Very useful for horses that have clearly indicated that they do not like any sort of joint in the centre of the bit.

**4½" - 5½" (11.5cm - 14.5cm)**

Sizes for Metal Bits are shown as a guide to standard stock. Please ask if other sizes are required.

The maximum size for a Rubber or Vulcanite bit is 6" (15.0cm)

## BITS

British Made



### Mullen Mouth Hanging Cheek

A hanging cheek with a mullen mouth acting right across the middle of the tongue. Very useful for horses that have clearly indicated that they do not like any sort of joint in the centre of the bit.

**4" - 5½" (10.0cm - 14.5cm)**



### Vulcanite Jointed Hanging Cheek

A single jointed bit with a covering of vulcanite. This can be quite thick for Horses with small mouths or very fleshy mouths with thick tongues.

**5", 5½" (12.5cm, 14.0cm)**

**Also Available in Rubber**



### Copper Roller Hanging Cheek

The rollers on this bit move under the horse's tongue as it reaches into the bit. The size of the rollers make this quite a thin bit and as it is a single jointed bit can have rather a pinch to it in the wrong hands.

**5", 5½" (12.5cm, 14.0cm)**



### Fillis Snaffle

This is in effect a double jointed bit with room for the tongue in the centre because of the square port.

**4½" - 6" (11.5cm - 15.0cm)**

## Other Cheeked bits in our range include the following:

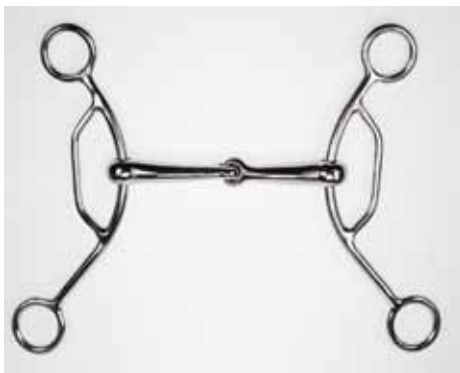
Thin Triangular Jointed Full Cheek	5" - 5¾	(12.5cm - 14.5cm)
Dr. Bristol Twisted Full Cheek	5" - 5½"	(12.5cm - 14.0cm)
Copper Roller Port Mouth Full Cheek	5" - 5¾	(12.5cm - 14.5cm)
Rubber Loller Full Cheek	5", 5½"	(12.5cm, 14.0cm)
Copper Roller French Full Cheek	5" - 5¾	(12.5cm - 14.5cm)
Cheese grater Full Cheek	5½"	(12.5cm) only
Fast Twisted Dr. Bristol Full Cheek	4½" - 5½"	(11.5cm - 14.0cm)
Hexagonal Jointed Full Cheek	5", 5½"	(12.5cm, 14.0cm)
Windsucker Full Cheek	5", 5½"	(12.5cm, 14.0cm)
Magennis Full Cheek	5¼", 5½"	(13.0cm, 14.0cm)
Arch Link Full Cheek	5" - 5½"	(12.5cm - 14.0cm)
Copper Nut Twisted Full Cheek	5" - 5¾	(12.5cm - 14.5cm)
Copper Nut Vulcanite Full Cheek	5" - 5¾	(12.5cm - 14.5cm)
Windsucker Elevator	5", 5½"	(12.5cm, 14.0cm)
Dr. Bristol Half Spoon	4½" - 5½"	(11.5cm - 14.0cm)
French Mouth Rubber Hanging Cheek	5", 5½"	(12.5cm, 14.0cm)

## BITS

British Made

Sizes for Metal Bits are shown as a guide to standard stock. Please ask if other sizes are required.

The maximum size for a Rubber or Vulcanite bit is 6" (15.0cm)



### Jointed American Gag

This bit with its long sliding cheek gives a very strong leverage action and again as with all leverage bits is best ridden with two reins so that the rider can play between leverage and less leverage. The mouthpiece gives a pinching nutcracker action acting upon the sides of the tongue and the sides of the bars of the mouth.

4" - 6" (10.0cm - 15.0cm)



### Thick Mouth American Gag

The mouthpiece even though it is thicker still gives a pinching action acting upon the sides of the tongue and the sides of the bars of the mouth.

5", 5½" (12.5cm, 14.5cm)



### French Link American Gag

This bit with its long slide to the where the mouthpiece joins the shank gives a very strong leverage action and again as with all leverage bits is best ridden with two reins so that the rider can play between leverage and less leverage. The French link lessens the pinch and allows for more tongue room in the centre of the bit.

4½" - 6" (11.5cm - 15.0cm)



### Vulcanite Jointed American Gag

Very similar action to the thicker metal mouth, but in this case covered with either rubber or vulcanite. Again, uses a very strong leverage pressure.

4½" - 6" (11.5cm - 15.0cm)

Also Available in Rubber



### Dr. Bristol American Gag

The oblong central plate which is set at an angle lies on top of the tongue, digging in right across the tongue and leverage is applied and the mouthpiece turns as the reins are used

4½" - 5½" (11.5cm - 14.0cm)



### Rubber Mullen American Gag

The mullen mouth makes this a mild bit with the even with the leverage exerted by the long cheeks. The bulk of the vulcanite reduces the pressure even more to provide a very gentle action.

4½" - 6" (11.5cm - 15.0cm)

Sizes for Metal Bits are shown as a guide to standard stock. Please ask if other sizes are required.

The maximum size for a Rubber or Vulcanite bit is 6" (15.0cm)

## BITS

British Made



### Cherry Roller American Gag

The stainless steel rollers dissuade the horse from reaching into or leaning on the bit. The jointed mouth exerts a pinching action on the sides of the tongue and the sides of the bars of the mouth. The long Cheeks make the leverage severe, lifting the lips upwards and pulling down on the poll at the same time.

5", 5½" (12.5cm, 14.0cm)

Also Available in copper



### Copper Roller American Gag

The same actions apply as on all American Gags but these copper rollers are much narrower than the thicker cherry rollers and are therefore potentially much more severe. The copper encourages salivation and the rollers encourage the horse not to lean into the mouthpiece. The cheeks exert severe pressure to the corners of the lips and the poll area.

5", 5½" (12.5cm, 14.0cm)



### Waterford American Gag

The linked mouthpiece is so moveable as the horse reaches into it with its tongue the mouthpiece moves and discourages the horse from leaning into the action.

5", 5½" (12.5cm, 14.0cm)



### Mullen Mouth American Gag

The mullen mouth makes this a relatively mild bit with the even with the leverage exerted by the long cheeks

5", 5½" (12.5cm, 14.0cm)



### Twisted American Gag

The sharp edges of the twisted mouth along with the nutcracker action and the long leverage of the cheeks make this a severe bit acting on all pressure points

5", 5½" (12.5cm, 14.0cm)



### Tom Thumb Bit

A variation on the American gag with shorter cheeks exerting less leverage. The copper ring link reduces the nutcracker effect of the bit and combination of sweet metal and copper encourage play and salivation

5" - 6" (12.5cm - 15.0cm)





## BITS

British Made

Sizes for Metal Bits are shown as a guide to standard stock. Please ask if other sizes are required.

The maximum size for a Rubber or Vulcanite bit is 6" (15.0cm)



### Cheltenham Gag

When you use a conventional gag the rein that is attached to the roundings pulls the bit upwards in the mouth stretching the corner so the lips upwards gripping the Horses head between the lips and the poll and putting pressure on the corners, raising the head.

4" - 6½" (10.0cm -16.0cm)



### 4" Ring Cheltenham Gag (Polo)

The larger ring increases the pressure. With the single joint firstly the bit collapses and the branches of the mouthpiece pinch the tongue and then as the Gag cheek shortens the lips are drawn up towards the poll the horse is forced to open the mouth and raise the head to try to alleviate the pressure.

4" - 6" (10.0cm - 15.0cm)



### Vulcanite Jointed Cheltenham Gag

The vulcanite jointed mouthpiece makes this a thicker bit and would allow the horse to get purchase on the mouthpiece, but still with the gag action.

5", 5½" (12.5cm, 14.0cm)

Also Available in Rubber



### Cherry Roller Cheltenham Gag

The stainless rollers dissuade the horse from reaching into or leaning on the bit. The jointed mouth exerts a pinching action on the sides of the tongue and the sides of the bars of the mouth. The long Cheeks make the leverage severe, lifting the lips upwards and pulling down on the poll at the same time.

5", 5½" (12.5cm, 14.0cm)

Also Available with Copper Rollers



### French Mouth Cheltenham Gag

A Cheltenham gag should always be ridden with two sets of reins one on the back of the snaffle ring and one on the gag cheek so that the rider can alternate between the severe gag and the snaffle action.

5", 5½" (12.5cm, 14.0cm)



### Twisted Cheltenham Gag (4" Ring - Polo)

The sharp edges of the twisted mouth along with the nutcracker action and the gag action of the cheeks make this a severe bit acting on all pressure points. The large rings accentuate the gag action

5", 5½" (12.5cm, 14.0cm)

Also Available with Standard Rings



### Dr. Bristol Cheltenham Gag

The oblong central plate which is set at an angle lies on top of the tongue, digging in right across the tongue and leverage is applied and the mouthpiece turns as the reins are used

5", 5½" (12.5cm, 14.0cm)



### Shrewsbury & Salisbury Gags

This looks like a Balding or loose ring cheek but the mouthpiece is cleverly caught between the cheek so that there is no pinch at the corners of the lips. Shrewsbury - 2½" Ring, Salisbury - 4" Ring

5", 5½" (12.5cm, 14.0cm)





Sizes for Metal Bits are shown as a guide to standard stock. Please ask if other sizes are required.

The maximum size for a Rubber or Vulcanite bit is 6" (15.0cm)

## BITS

British Made



### Balding Gag

A jointed mouthpiece with a nutcracker action but this time with a loose ring side called Balding when it is a gag

4" - 6½" (10.0cm - 16.0cm)

All Balding Gags are available with 3" or 4" Rings



### Half Balding Gag

5", 5½" (12.5cm, 14.0cm)



### Overcheck Gag

5", 5½", 6" (12.5cm, 14.0cm, 15.0cm)

Also Available Jointed



### Barry Gag

5", 5½" (12.5cm, 14.0cm)

All Barry Gags are available with 3" or 4" rings



### Barry Gag Sweet Metal

5", 5½" (12.5cm, 14.0cm)

Also Available with Copper Mouth



### Twisted Barry Gag

5", 5½" (12.5cm, 14.0cm)



### Half Twisted Barry Gag

5", 5½" (12.5cm, 14.0cm)



### Half Cheek Barry Gag

5", 5½" (12.5cm, 14.0cm)

Also Available with Copper, Sweet Metal or a Combination Mouth





## BITS

British Made

Sizes for Metal Bits are shown as a guide to standard stock. Please ask if other sizes are required.

The maximum size for a Rubber or Vulcanite bit is 6" (15.0cm)



**Nelson Gag Jointed**

5" - 5½" (12.5cm -14.0cm)



**Waterford Nelson Gag**

5", 5½" (12.5cm, 14.0cm)



**Vulcanite Jointed Nelson Gag**

5", 5½" (12.5cm, 14.0cm)  
Also Available in Rubber



**Copper Waterford Nelson Gag**

5", 5½" (12.5cm, 14.0cm)



**French Mouth Nelson Gag**

5", 5½" (12.5cm, 14.5cm)



**Copper Mouth Nelson Gag**

5", 5½" (12.5cm, 14.0cm)



**Cherry Roller Nelson Gag**

5", 5½" (12.5cm, 14.0cm)  
Also Available with Copper Rollers

Sizes for Metal Bits are shown as a guide to standard stock. Please ask if other sizes are required.

The maximum size for a Rubber or Vulcanite bit is 6" (15.0cm)

## BITS

British Made



**Twisted Nelson Gag**

5", 5½" (12.5cm, 14.0cm)



**Magennis Nelson Gag with Copper Rollers**

5", 5½" (12.5cm, 14.0cm)

Also Available with Stainless Steel Rollers



**Copper Ball Link Nelson Gag**

5", 5½" (12.5cm, 14.0cm)



**Peover Bit (Thick Mouth Jointed 3 Ring)**

5", 5½" (12.5cm, 14.0cm)



**Egerton Link Nelson Gag**

5", 5½" (12.5cm, 14.0cm)



**Hartford Link Peover**

5", 5½" (12.5cm, 14.0cm)



**Hartford Link Nelson Gag**

5", 5½" (12.5cm, 14.0cm)

Also Available with a Copper or Stainless Steel Roller



**Swivel Ring Bit (Cartwheel)**

5" - 6" (12.5cm - 15.0cm)

## BITS

British Made

Sizes for Metal Bits are shown as a guide to standard stock. Please ask if other sizes are required.

The maximum size for a Rubber or Vulcanite bit is 6" (15.0cm)



**Vulcanite Jointed Swivel Ring Bit**

5" - 6" (12.5cm -15.0cm)



**French Mouth Swivel Ring Bit**

5", 5½" (12.5cm, 14.0cm)



**Waterford Swivel Ring Bit**

5", 5½" (12.5cm, 14.0cm)



**Dr. Bristol Swivel Ring Bit**

5", 5½" (12.5cm, 14.0cm)



**Copper Waterford Swivel Ring Bit**

5", 5½" (12.5cm, 14.0cm)



**Hartford Link Swivel Ring Bit**

5", 5½" (12.5cm, 14.0cm)  
Also Available with Copper or Stainless Steel Roller



**Fast or Slow Twist Swivel Ring Bit**

5", 5½" (12.5cm, 14.0cm)



**Jointed Beval Bit**

5" - 6" (12.5cm - 15.0cm)



**Jointed Beval Pony / Bradoon Bit**

4½" - 5½" (11.5cm - 14.0cm)



Sizes for Metal Bits are shown as a guide to standard stock. Please ask if other sizes are required.

The maximum size for a Rubber or Vulcanite bit is 6" (15.0cm)

## **BITS**

**British Made**



**Rubber Jointed Beval Bit**

**5", 5½" (12.5cm, 14.0cm)**  
**Also Available in Vulcanite**



**Thick Mouth Beval Bit**

**5", 5½" (12.5cm, 14.0cm)**



**French Mouth Beval Bradoon**

**4½" - 5½" (11.5cm - 14.0cm)**



**Copper Ball Link Gag**

**5", 5½" (12.5cm, 14.0cm)**



**French Mouth Beval Snaffle**

**5", 5½", 6" (12.5cm, 14.5cm, 15.0cm)**



**Rubber Jointed Gag**

**5", 5½" (12.5cm, 14.0cm)**  
**Also Available in Vulcanite**



**Copper Roller Waterford Beval Bit**

**5", 5½" (12.5cm, 14.0cm)**



**Rubber Mullen Gag**

**5" - 6" (12.5cm - 15.0cm)**  
**Also Available in Vulcanite**



**Waterford Beval Bit**

**5", 5½" (12.5cm, 14.0cm)**



**Rubber Mullen Gag**

**5" - 6" (12.5cm - 15.0cm)**  
**Also Available in Vulcanite**





## BITS

British Made

Sizes for Metal Bits are shown as a guide to standard stock. Please ask if other sizes are required.

The maximum size for a Rubber or Vulcanite bit is 6" (15.0cm)



**French Mouth Rubber Jointed Gag**

5" - 6" (12.5cm -15.0cm)  
Also Available in Vulcanite



**Cherry Roller Gag**

4½" - 6" (11.5cm - 15.0cm)  
Also Available with Copper Rollers



**Dr. Bristol Gag**

5", 5½" (12.5cm, 14.0cm)



**Waterford Gag**

5" - 6" (12.5cm -15.0cm)



**Thick Mouth Gag**

5" - 6" (12.5cm -15.0cm)



**Mullen Mouth Gag**

5", 5½" (12.5cm, 14.0cm)



**Slow Twist Gag**

5", 5½", 6" (12.5cm, 14.0cm, 15.0cm)



**Copper Thick Mouth Gag**

5", 5½" (12.5cm, 14.0cm)



**Fast Twist Gag**

5", 5½", 6" (12.5cm, 14.0cm, 15.0cm)



**Copper Jointed Gag**

5", 5½" (12.5cm, 14.0cm)  
Shown here with 4" rings. All loose ring gags available with 3" or 4" rings

Sizes for Metal Bits are shown as a guide to standard stock. Please ask if other sizes are required.

The maximum size for a Rubber or Vulcanite bit is 6" (15.0cm)

## BITS

British Made



**Segundo Jointed Gag (Tight)**

**5", 5½" (12.5cm, 14.0cm)**

**Also Available with open port**



**Jointed Pelham Gag**

**5" - 5¾" (12.5cm - 14.5cm)**



**Port Mouth Pelham Gag**

**5" - 5¾" (12.5cm - 14.5cm)**



**Mullen Pelham Gag**

**5" - 5¾" (12.5cm - 14.5cm)**

### Other Gags in our range include the following:

Mullen Mouth Cheltenham	5" - 5½"	(12.5cm - 14.0cm)
Thick Mouth Cheltenham	5", 5½"	(12.5cm, 14.0cm)
Segundo Jointed Cheltenham	5" - 5¾"	(12.5cm - 14.5cm)
Tom Thumb Mouth Balding	5", 5½", 6"	(12.5cm - 15.0cm)
Jointed Breaking Nelson	5", 5½"	(12.5cm, 14.0cm)
Segundo Jointed Nelson	5" - 5¾"	(12.5cm - 14.5cm)
Copper Roller Port Nelson	5" - 5½"	(12.5cm - 14.0cm)
Copper Roller Nagbutt Nelson	5" - 5½"	(12.5cm - 14.0cm)
Egerton Waterford Swivel Ring	5" - 5½"	(12.5cm - 14.0cm)
Hexagonal Jointed Swivel Ring	5" - 5½"	(12.5cm - 14.0cm)
Flat Jointed Swivel Ring	5" - 5½"	(12.5cm - 14.0cm)
Magennis Swivel Ring	5" - 5½"	(12.5cm - 14.0cm)
Twisted Beval Bit	5", 5½"	(12.5cm, 14.0cm)
Dick Christian Gag	5", 5½"	(12.5cm, 14.0cm)
Duncan Gag	5", 5½"	(12.5cm, 14.0cm)
Hitchcock Gag	5", 5½"	(12.5cm, 14.0cm)
Magennis Gag	5¼", 5½"	(13.0cm, 14.0cm)
Single Twisted Wire Gag	5", 5½"	(12.5cm, 14.0cm)
Double Twisted Wire	5", 5½"	(12.5cm, 14.0cm)
Figure 8 Gag	5", 5½"	(12.5cm, 14.0cm)

Copper Jointed Pelham Gag

Balding, Barry and Cheltenham Gags are available with a choice of 3" and 4" rings.

Many mouths can be supplied in copper or sweet metal on request.



## BITS

**British Made**

Sizes for Metal Bits are shown as a guide to standard stock. Please ask if other sizes are required.

The maximum size for a Rubber or Vulcanite bit is 6" (15.0cm)



**Standard Weight Jointed Pelham**

**5" - 6½" (12.5cm -16.0cm)**



**Standard Weight Mullen Pelham**

**5" - 7" (12.5cm - 17.5cm)**  
**Also Available in Light Weight sizes:**  
**4" - 5½" (10.0cm - 14.0cm)**



**Light Weight Jointed Pelham**

**4" - 6" (10.0cm -15.0cm)**



**Heavy Mullen Pelham**

**5", 5½" (12.5cm, 14.0cm)**



**Copper Jointed Pelham**

**5", 5½" (12.5cm, 14.0cm)**



**Standard Port Mouth Pelham**

**5" - 6½" (12.5cm -16.0cm)**

Sizes for Metal Bits are shown as a guide to standard stock. Please ask if other sizes are required.

The maximum size for a Rubber or Vulcanite bit is 6" (15.0cm)

## **BITS**

**British Made**



**Light Weight Port Mouth Pelham**

**4" - 5½" (10.0cm - 14.0cm)**



**Port Mouth Loose Ring Show Pelham**

**4" - 5½" (10.0cm - 14.5cm)**



**High Port Pelham**

**5" - 6" (12.5cm -15.0cm)**



**Waterford Pelham**

**5" - 6" (12.5cm -15.0cm)**



**French Mouth Pelham**

**4" - 6" (10.0cm -15.0cm)**

**Also Available with a Copper Link**



**Vulcanite Mullen Pelham**

**4" - 6" (10.0cm -15.0cm)**

**Also Available in Rubber on Metal or Flexible Rubber with 4" or 5" Cheeks**



## BITS

**British Made**

Sizes for Metal Bits are shown as a guide to standard stock. Please ask if other sizes are required.

The maximum size for a Rubber or Vulcanite bit is 6" (15.0cm)



**Vulcanite Port Pelham (4" Cheek)**

**5" - 5½" (12.5cm -14.0cm)**

**Also Available in Rubber with 4" or 5" cheeks**



**Rubber Loller Pelham**

**5" , 5½" (12.5cm, 14.0cm)**

**Available with a 4" or 5" cheek**



**Vulcanite French Link Pelham**

**4" - 5½" (10.0cm - 14.0cm)**

**Also Available in Rubber with 4" or 5" cheeks**



**Angled Plate Pelham**

**5" , 5½" (12.5cm, 14.0cm)**



**Rubber Jointed Pelham**

**5" , 5½" (12.5cm, 14.0cm)**

**Also Available in Vulcanite with 4" or 5" cheek**



**Copper Ball Link Pelham**

**5" - 5¾" (12.5cm - 14.5cm)**



Sizes for Metal Bits are shown as a guide to standard stock. Please ask if other sizes are required.

The maximum size for a Rubber or Vulcanite bit is 6" (15.0cm)

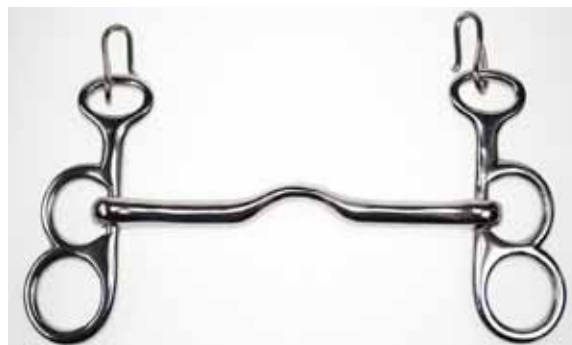
## BITS

British Made



**Jointed Segundo Pelham (tight)**

5" , 5½" (12.5cm, 14.0cm)



**Port Mouth Butterfly Pelham**

4" - 5½" (10.0cm - 14.0cm)



**Port Mouth Globe Pelham**

4" - 5½" (10.0cm - 14.0cm)



**Mullen Butterfly Pelham**

4" - 5½" (10.0cm - 14.0cm)



**Mullen Globe Pelham**

4" - 5½" (10.0cm - 14.0cm)



**Jointed Butterfly Pelham**

4" - 5½" (10.0cm - 14.0cm)



## BITS

British Made

Sizes for Metal Bits are shown as a guide to standard stock. Please ask if other sizes are required.

The maximum size for a Rubber or Vulcanite bit is 6" (15.0cm)



Rubber Mullen Butterfly Pelham

4½" - 5½" (10.0cm - 14.0cm)



Jointed Butterfly Flip Bit

5" - 5¾" (12.5cm - 14.5cm)



French Link Butterfly Pelham

4" - 5¾" (10.0cm - 14.5cm)



Copper Waterford Butterfly Flip Bit

5" - 6" (12.5cm - 15.0cm)



Lozenge Link Butterfly Flip Bit

5" - 6" (12.5cm - 15.0cm)



Rubber Jointed Butterfly Pelham

5", 5½" (12.5cm, 14.0cm)

Also Available in Vulcanite



Slotted Kimblwick (Cambridge Mouth)

4" - 6½" (10.0cm, 16.0cm)

Sizes for Metal Bits are shown as a guide to standard stock. Please ask if other sizes are required.

The maximum size for a Rubber or Vulcanite bit is 6" (15.0cm)

## BITS

British Made



**Unslotted Kimblewick (Cambridge Mouth)**

4" - 6½" (10.0cm, 16.0cm)



**Unslotted French Link Kimblewick**

4" - 5½" (10.0cm - 14.0cm)

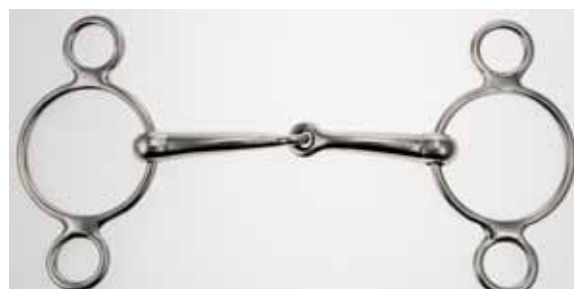
Also Available with Slotted Cheeks



**Unslotted Kimblewick Jointed**

4" - 6½" (10.0cm, 16.0cm)

Also Available with a Slotted Cheeks



**Jointed 3 Ring**

4" - 7" (10.0cm - 17.5cm)



**Unslotted Mullen Kimblewick**

4" - 6" (10.0cm, 15.0cm)

Also Available with Slotted Cheeks



**Jointed 4 Ring (Continental)**

4" - 7" (10.0cm - 17.5cm)



**Slotted Rubber Kimblewick**

4½" - 6" (11.5cm, 15.0cm)

Also Available with Unslotted Cheeks

**Note: All 4 Ring Bits are available in the 3 Ring format**



## BITS

British Made

Sizes for Metal Bits are shown as a guide to standard stock. Please ask if other sizes are required.

The maximum size for a Rubber or Vulcanite bit is 6" (15.0cm)



**Thick Tapered Mouth 3 Ring**

5" - 6" (12.5cm - 15.0cm)



**Dr. Bristol 3 Ring**

4½" - 6" (11.5cm, 15.0cm)



**Waterford 3 Ring**

5" - 6" (12.5cm - 15.0cm)



**Rubber Jointed 4 Ring**

4½" - 6" (11.5cm, 15.0cm)

Also Available in Vulcanite



**Copper Waterford 4 Ring**

5", 5½" (12.5cm, 14.0cm)



**Mullen Mouth 3 Ring**

4" - 6" (10.0cm - 15.0cm)



**Rubber Mullen 3 Ring**

4½" - 6" (11.5cm, 15.0cm)

Also Available in Vulcanite

Sizes for Metal Bits are shown as a guide to standard stock. Please ask if other sizes are required.

The maximum size for a Rubber or Vulcanite bit is 6" (15.0cm)

## **BITS**

**British Made**



**Cherry Roller 4 Ring**

**5" - 6" (12.5cm, 15.0cm)**  
**Also Available with Copper Rollers**



**Slow Twist 3 Ring**

**5", 5½" (12.5cm, 14.0cm)**  
**Also Available with Fast Twist**



**Hartford Link Swivel 4 Ring**

**5", 5½" (12.5cm, 14.0cm)**



**Lozenge Link 3 Ring**

**5", 5½" (12.5cm, 14.0cm)**



**Jointed Rugby Pelham**

**4" - 6" (10.0cm - 15.0cm)**



**French Mouth 4 Ring**

**4½" - 6" (11.5cm, 15.0cm)**



**French Mouth Rugby Pelham**

**4" - 6" (10.0cm - 15.0cm)**





## BITS

**British Made**

Sizes for Metal Bits are shown as a guide to standard stock. Please ask if other sizes are required.

The maximum size for a Rubber or Vulcanite bit is 6" (15.0cm)



**Port Mouth Rugby Pelham**

4" - 6" (10.0cm - 15.0cm)



**Mullen Mouth Rugby Pelham**

4" - 6" (10.0cm - 15.0cm)



**Rubber Mullen Rugby Pelham**

5" - 6" (12.5cm - 15.0cm)

Also Available in Vulcanite



**Vulcanite Port Mouth Rugby Pelham**

5" - 6" (12.5cm - 15.0cm)

Also Available in Vulcanite



**Hanoverian Pelham**

5" - 6" (12.5cm - 15.0cm)

Also Available with a Fixed Port



**Hanoverian Pelham with Copper Rollers**

5" - 6" (12.5cm - 15.0cm)



**Sam Marsh Pelham**

5" - 6" (12.5cm - 15.0cm)

Sizes for Metal Bits are shown as a guide to standard stock. Please ask if other sizes are required.

The maximum size for a Rubber or Vulcanite bit is 6" (15.0cm)

## BITS

British Made



**Hartwell Pelham (5" Cheek)**

5", 5½" (12.5cm, 14.0cm)



**Coscoquero Pelham with Sweet Metal Mouth**

5", 5½" (12.5cm, 14.0cm)



**Hartwell Pelham (6" Cheek)**

5", 5½" (12.5cm, 14.0cm)



**Cocoquero Pelham (6" Cheek)**

5", 5½" (12.5cm, 14.0cm)



**Copper Hartwell Pelham**

5", 5½" (12.5cm, 14.0cm)



**Egglink Pelham**

5", 5½" (12.5cm, 14.0cm)



## BITS

**British Made**

Sizes for Metal Bits are shown as a guide to standard stock. Please ask if other sizes are required.

The maximum size for a Rubber or Vulcanite bit is 6" (15.0cm)



**Swales 3 - in - 1**

5" - 6" (12.5cm - 15.0cm)  
Swales Rings can be applied to a variety of mouths on request



**Cherry Roller Pelham**

5" - 5½" (12.5cm - 14.0cm)  
Also Available with Copper Rollers



**Vulcanite Swales 3 - in - 1**

5" - 6" (12.5cm - 15.0cm)  
Also Available in Rubber



**Copper Ball Link Pelham**

5" - 5¾" (12.5cm - 14.5cm)



**Magennis Pelham**

5¼", 5½" (13.0cm - 14.0cm)  
Also Available with Copper rollers



**Jointed Segundo Pelham (Tight)**

5" - 5½" (12.5cm - 14.0cm)  
Also Available with Open Port

Sizes for Metal Bits are shown as a guide to standard stock. Please ask if other sizes are required.

The maximum size for a Rubber or Vulcanite bit is 6" (15.0cm)

## **BITS**

**British Made**



**Hartwell Pelham (5" Cheek)**

5", 5½" (12.5cm, 14.0cm)



**Coscoquero Pelham with Sweet Metal Mouth**

5", 5½" (12.5cm, 14.0cm)



**Hartwell Pelham (6" Cheek)**

5", 5½" (12.5cm, 14.0cm)



**Cocoquero Pelham (6" Cheek)**

5", 5½" (12.5cm, 14.0cm)



**Copper Hartwell Pelham**

5", 5½" (12.5cm, 14.0cm)



**Egglink Pelham**

5", 5½" (12.5cm, 14.0cm)





## BITS

British Made

Sizes for Metal Bits are shown as a guide to standard stock. Please ask if other sizes are required.

The maximum size for a Rubber or Vulcanite bit is 6" (15.0cm)



**Tom Thumb Mouth Pelham**

5", 5½" (12.5cm, 14.0cm)



**Angled Plate Pelham**

5", 5½" (12.5cm, 14.0cm)



**Windsucker Pelham**

5", 5½" (12.5cm, 14.0cm)

Also Available in Copper

### Other Pelhams in our range include the following:

Lt Wt. Angled Mullen Mouth	5" - 5¾"	(12.5cm - 14.5cm)
Dr. Bristol	5" - 5½"	(12.5cm - 14.0cm)
Copper Nut Link	5" - 5¾"	(12.5cm - 14.5cm)
Single Twisted Wire	5" - 5¾"	(12.5cm - 14.5cm)
Double Twisted Wire	5" - 5¾"	(12.5cm - 14.5cm)
Flat Port	5" - 5¾"	(12.5cm - 14.5cm)
Jointed Triangular Grid Link	5", 5½"	(12.5cm, 14.0cm)
Jointed Segundo Butterfly Flip Bit	5" - 5¾"	(12.5cm - 14.5cm)
Hartford Link Butterfly Flip Bit	5" - 5¾"	(12.5cm - 14.5cm)
Jointed Segundo 3 / 4 Ring	5", 5½"	(12.5cm, 14.0cm)
Cheesegrater 3 / 4 Ring	5½"	(12.5cm)
Magennis 3 / 4 Ring	5¼", 5½"	(13.0cm, 14.0cm)
Solid Spinner Sliding 3 / 4 Ring	5", 5½"	(12.5cm, 14.0cm)
Hartwell Rugby	5", 5½"	(12.5cm, 14.0cm)
Scamperdale	4½" - 6"	(11.5cm, 15.0cm)
Banbury Pelham	5", 5½"	(12.5cm, 14.0cm)
Egerton Link	5" - 5¾"	(12.5cm - 14.5cm)
Twisted Mouth	5" - 5¾"	(12.5cm - 14.5cm)
Copper Roller Port Mouth	5" - 5½"	(12.5cm - 14.0cm)
Figure of Eight	5" - 5½"	(12.5cm - 14.0cm)
Ball Joint "Pinchless"	5" - 5½"	(12.5cm - 14.0cm)
Vulcanite Jointed Breaking	5" - 5½"	(12.5cm - 14.0cm)
Vulcanite Jointed Copper Nut Link	5" - 5½"	(12.5cm - 14.0cm)

Many mouths can be supplied in copper or sweet metal on request.



Sizes for Metal Bits are shown as a guide to standard stock. Please ask if other sizes are required.

The maximum size for a Rubber or Vulcanite bit is 6" (15.0cm)

## BITS

British Made



**Fixed Cheek Weymouth Set - Tom Thumb 4 $\frac{3}{4}$ " Cheek**

4" - 5 $\frac{1}{2}$ " (10.0cm - 14.0cm)



**Tom Thumb Weymouth Set**

4" - 6" (10.0cm - 15.0cm)



**Std Fixed Cheek Weymouth Set - 5 $\frac{1}{2}$ " Cheek**

5" - 6" (12.5cm - 15.0cm)



**Standard Weymouth Set**

4 $\frac{1}{2}$ " - 6 $\frac{1}{2}$ " (11.5cm - 16.0cm)



**High Port Fixed Cheek Weymouth Set**

4" - 5 $\frac{1}{2}$ " (10.0cm - 14.0cm)



**Banbury Weymouth Bit Only**

4" - 6" (10.0cm - 15.0cm)

Weymouth Curbs and Bradoons are also available separately



## BITS

**British Made**

Sizes for Metal Bits are shown as a guide to standard stock. Please ask if other sizes are required.

The maximum size for a Rubber or Vulcanite bit is 6" (15.0cm)



**Hackney Weymouth Bit Only**

**4½" x 6" (11.5cm x 15.0cm)**



**Liverpool 2 Slot**

**3½" - 7" (9.0cm - 17.5cm)**

**Also Available with Copper Rollers**



**Arch Mouth Fixed Weymouth Set**

**5", 5½" (12.5cm, 14.0cm)**



**Port Mouth Liverpool 3 Slot**

**4" - 6" (10.0cm - 15.0cm)**

**Other Weymouths in our range include the following:**

**Rubber Weymouth Bit Only** 5" - 6" (12.5cm - 15.0cm)  
**Segundo Weymouth Bit Only** 5", 5½" (12.5cm, 14.0cm)

Weymouth Bradoons are supplied ½" larger than the curb as standard and are jointed. We can supply other sizes or other styles such as twisted or with a French link or Lozenge link on request.

All Liverpools are available as 2 Slot or 3 Slot patterns. Cheeks are supplied as Pony, Cob or Full size depending on mouth size.  
 All Vulcanite bits are also available in Rubber

Sizes for Metal Bits are shown as a guide to standard stock. Please ask if other sizes are required.

The maximum size for a Rubber or Vulcanite bit is 6" (15.0cm)

## **BITS**

**British Made**



**High Port Liverpool**

**5" - 6" (12.5cm - 15.0cm)**



**Vulcanite Liverpool**

**4" - 6" (10.0cm - 15.0cm)**



**Mullen Mouth Liverpool**

**4" - 6" (10.0cm - 15.0cm)**



**Jointed Liverpool**

**4" - 6" (10.0cm - 15.0cm)**



**Rubber Jointed Liverpool**

**5" - 5½" (12.5cm - 14.0cm)**



## BITS

**British Made**

Sizes for Metal Bits are shown as a guide to standard stock. Please ask if other sizes are required.

The maximum size for a Rubber or Vulcanite bit is 6" (15.0cm)



**French Mouth Liverpool**

**4" - 6" (10.0cm - 15.0cm)**



**Liverpool Hanoverian**

**5" - 5¾" (12.5cm - 14.5cm)**  
Also Available with Copper Rollers



**Rubber Loller Liverpool**

**5", 5½" (12.5cm, 14.0cm)**



**Liverpool Port Mouth Copper Roller**

**5" - 5½" (12.5cm - 14.0cm)**  
Also Available with Stainless Steel Rollers



**Cherry Roller Liverpool**

**4" - 6" (10.0cm - 15.0cm)**  
Also Available with Copper Rollers



**Liverpool Segundo**

**5" - 6" (12.5cm - 16.0cm)**



Sizes for Metal Bits are shown as a guide to standard stock. Please ask if other sizes are required.

The maximum size for a Rubber or Vulcanite bit is 6" (15.0cm)

## **BITS**

**British Made**



**Liverpool Bottom Bar**

**4" - 6" (10.0cm - 15.0cm)**

**Also Available with a fixed bottom bar**



**Swales Driving**

**5" - 6" (12.5cm - 15.0cm)**



**Port Swales Liverpool**

**5" - 6" (12.5cm - 15.0cm)**



**Liverpool Coscoquero**

**5" - 5½" (12.5cm - 14.0cm)**



**Liverpool Port Mouth Breaking**

**5" - 5¾" (12.5cm - 14.5cm)**



**Liverpool Vulcanite Mouth Bottom Bar**

**5" - 6" (12.5cm - 15.0cm)**

**Also Available in Rubber**





## BITS

**British Made**

Sizes for Metal Bits are shown as a guide to standard stock. Please ask if other sizes are required.

The maximum size for a Rubber or Vulcanite bit is 6" (15.0cm)



**Liverpool Arch Mouth**

4" - 5½" (10.0cm - 14.0cm)  
Also Available with sliding cheek



**Liverpool Copper Mouth**

4" - 6" (10.0cm - 15.0cm)  
Also Available in Mullen or Arch Mouths



**Liverpool Sam Marsh**

5", 5½" (12.5cm, 14.0cm)



**Buxton**

4½" - 6" (11.5cm - 15.0cm)



**Liverpool Jointed Breaking**

5" - 5½" (12.5cm - 14.0cm)

Sizes for Metal Bits are shown as a guide to standard stock. Please ask if other sizes are required.

The maximum size for a Rubber or Vulcanite bit is 6" (15.0cm)

## **BITS**

**British Made**



**Hanoverian Buxton**

**5" - 6" (12.5cm - 15.0cm)**



**Port Mouth Buxton**

**5" - 5½" (12.5cm - 14.0cm)**



**Coscoquero Buxton**

**5" - 5½" (12.5cm - 14.0cm)**



**Military Elbow Reversible**

**4½" - 6½" (11.5cm - 16.0cm)**



**Military Port Mouth, Rubber**

**5" - 6" (12.5cm - 15.0cm)**  
**Also Available in Vulcanite**



## BITS

**British Made**

Sizes for Metal Bits are shown as a guide to standard stock. Please ask if other sizes are required.

The maximum size for a Rubber or Vulcanite bit is 6" (15.0cm)



**Military Elbow, French Mouth**

5" - 6" (12.5cm - 15.0cm)



**Port Mouth Post Bit**

5", 5½" (12.5cm, 14.0cm)

Also Available with a High Port



**Military Elbow, Bottom Bar**

5" - 6" (12.5cm - 15.0cm)



**French Mouth Post Bit**

5", 5½" (12.5cm, 14.0cm)



**Vulcanite Mullen Post Bit**

5", 5½" (12.5cm, 14.0cm)



**Military Elbow, Copper Mullen Mouth**

4" - 6" (10.0cm - 15.0cm)

Also Available with a Stainless Steel Mouth



**Hanoverian Post Bit**

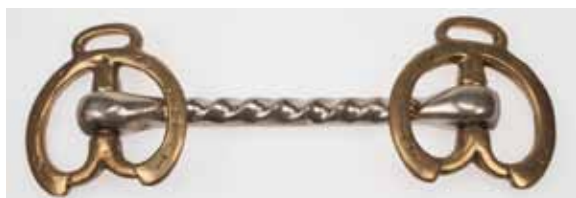
5", 5½" (12.5cm, 14.0cm)

Sizes for Metal Bits are shown as a guide to standard stock. Please ask if other sizes are required.

The maximum size for a Rubber or Vulcanite bit is 6" (15.0cm)

## BITS

British Made



**Metropolitan, Brass Cheek**

4" - 6½" (10.0cm - 16.0cm)



**French Link Wilson**

4" - 6" (10.0cm - 15.0cm)



**Metropolitan Mullen Mouth**

4" - 6½" (10.0cm - 16.0cm)



**Vulcanite Mullen Wilson**

5", 5½" (12.5cm, 14.0cm)



**Metropolitan Jointed**

4" - 6½" (10.0cm - 16.0cm)



**Copper Mullen Wilson**

4½" - 6" (11.5cm - 15.0cm)



**Jointed Wilson**

4" - 6" (10.0cm - 15.0cm)



**Rubber Jointed Wilson**

5", 5½" (12.5cm, 14.0cm)



**Mullen Mouth Wilson**

4" - 6" (10.0cm - 15.0cm)



**Slow Twist Wilson**

5", 5½" (12.5cm, 14.0cm)



## BITS

**British Made**

Sizes for Metal Bits are shown as a guide to standard stock. Please ask if other sizes are required.

The maximum size for a Rubber or Vulcanite bit is 6" (15.0cm)



**Horseshoe Wilson (Nickel Cheeks)**

**5½" (14.0cm)**

### Other Driving Bits in our range include the following:

Fixed Cheek Liverpool	5" - 5¾"	(12.5cm - 14.5cm)
Liverpool Fillis	5" - 5¾"	(12.5cm - 14.5cm)
Liverpool Port Copper Roller Bottom Bar	5" - 5½"	(12.5cm - 14.0cm)

Liverpool Brass Cheeks - Brass Cheeks can be added to many patterns on request

High Port Buxton	5" - 6"	(12.5cm, 15.0cm)
Segundo Buxton	5" - 6"	(12.5cm, 15.0cm)

Military Elbow Reversible Jointed	4½" - 5½"	(11.5cm - 14.0cm)
-----------------------------------	-----------	-------------------

Barmouth Post Bit	5", 5½"	(12.5cm, 14.0cm)
Port Copper Roller Post Bit	5" - 5½"	(12.5cm - 14.0cm)

Post Bits are available in a variety of mouths on request



**Combination Hackamore - Jointed Mouth**

**5", 5½" (12.5cm, 14.0cm)**



**Combination Hackamore - Dr. Bristol**

**5", 5½" (12.5cm, 14.0cm)**



**Combination Hackamore - Copper Waterford**

**5", 5½" (12.5cm, 14.0cm)**



Sizes for Metal Bits are shown as a guide to standard stock. Please ask if other sizes are required.

The maximum size for a Rubber or Vulcanite bit is 6" (15.0cm)

## **BITS**

**British Made**



**Combination Hackamore - Waterford**

**5", 5½" (12.5cm, 14.0cm)**



**Combination Hackamore - Copper Windsucker**

**5", 5½" (12.5cm, 14.0cm)**

**Also Available in Stainless Steel**

**Combination Hackamores are available in other mouth styles on request.**



**Combination Hackamore - Rubber Jointed**

**5", 5½" (12.5cm, 14.0cm)**

**Also Available in Vulcanite and Mullen Mouth**



**German Hackamore**

**Also Available in a long cheek pattern**



## BITS

**British Made**

Sizes for Metal Bits are shown as a guide to standard stock. Please ask if other sizes are required.

The maximum size for a Rubber or Vulcanite bit is 6" (15.0cm)



**Chifney - Brass**

4¼", 4¾" (10.5cm, 12.0cm)



**Cherry Roller Pelham**

5" - 5½" (12.5cm - 14.0cm)  
Also Available with Copper Rollers



**Chifney - Stainless Steel**

4¾", 5½" (12.0cm, 14.0cm)



**Copper Ball Link Pelham**

5" - 5¾" (12.5cm - 14.5cm)



**Tongue Grid**

One Size



**Jointed Segundo Pelham (Tight)**

5" - 5½" (12.5cm - 14.0cm)  
Also Available with Open Port

Sizes for Metal Bits are shown as a guide to standard stock. Please ask if other sizes are required.

The maximum size for a Rubber or Vulcanite bit is 6" (15.0cm)

## **BITS**

**British Made**



### **The Abbey Dressage Design**

These Stainless Steel bits feature forward curving mouths to allow a better fit in the horse's mouth.

All bits are based around a range of mouthpieces:

Port Mouth, Medium, Medium High and Hartwell

Mullen - a deep mullen mouth

Lozenge Link:

Three patterns, Full Lozenge, Half Lozenge vertical, Half Lozenge Horizontal (Flat)

These mouths are combined with standard cheeks, loose ring, eggbutt, dee cheek, hanging cheek, full cheek, Byley, pelham and weymouth



**Byley Medium Port (Short Cheek) 5" -**

**6" (12.5cm - 15.0cm)**



**Dee Cheek Full Lozenge**

**5" - 6" (12.5cm - 15.0cm)**



**Byley Hartwell Port (Short Cheek) 5" -**

**6" (12.5cm - 15.0cm)**



**Eggbutt Flat Lozenge**

**5" - 6" (12.5cm - 15.0cm)**



**Eggbutt Full Lozenge Mouth**

**5" - 6" (12.5cm - 15.0cm)**



**Byley Medium High Port (Long Cheek) 5" -**

**6" (12.5cm - 15.0cm)**



**Eggbutt Mullen Mouth**

**5" - 6" (12.5cm - 15.0cm)**



## BITS

British Made

Sizes for Metal Bits are shown as a guide to standard stock. Please ask if other sizes are required.

The maximum size for a Rubber or Vulcanite bit is 6" (15.0cm)



**Loose Ring Mullen Mouth**

5" - 6" (12.5cm - 15.0cm)



**Loose Ring Full Lozenge**

5" - 6" (12.5cm - 15.0cm)



**Loose Ring Flat Lozenge**

5" - 6" (12.5cm - 15.0cm)



**Loose Ring Half Lozenge (Vertical)**

5" - 6" (12.5cm - 15.0cm)



**Detail showing curved mouth and lozenge link**



**Full Cheek Mullen Mouth**

5" - 6" (12.5cm - 15.0cm)



**Hanging Cheek Mullen Mouth**

5" - 6" (12.5cm - 15.0cm)



**Hanging Cheek Medium High Port**

5" - 6" (12.5cm - 15.0cm)



**Kimblewick Medium Port**

5" - 6" (12.5cm - 15.0cm)



**Butterfly Pelham Hartwell Port**

5" - 6" (12.5cm - 15.0cm)



**Butterfly Pelham Hartwell Port**

5" - 6" (12.5cm - 15.0cm)

Sizes for Metal Bits are shown as a guide to standard stock. Please ask if other sizes are required.

The maximum size for a Rubber or Vulcanite bit is 6" (15.0cm)

## **BITS**

**British Made**



**Show Pelham Hartwell Port**

**5" - 6" (12.5cm - 15.0cm)**



**Hartwell Weymouth**

**5" - 6" (12.5cm - 15.0cm)**



**Medium High Port Weymouth**

**5" - 6" (12.5cm - 15.0cm)**





## Grangers Waterproofing

		Size	Pack Size
G-Wax	High Wax Leather Treatment	80 g Tin	24
	Natural, Dark Tan, Black	250 ml Aerosol	12



### Footwear Products - approved for Gore-Tex®

Footwear Proofer		250 ml Aerosol	12
Footwear Odour Eliminator		60 ml Spray Bottle	12
Paste Wax - New Product to waterproof smooth leathers:		75 ml Tube	12
	Easier to apply than G-Wax		
	Effective on Matt / Oiled Leather helping to		
	restore the appearance of these products		
	Excellent water and stain repellence		



### Clothing Products

Clothing Cleaner Plus	Residue Free Formula Maintains	300 ml	12
	Water Repellant finish on Fabric		
Wash-in Waterproofing for All Fabrics		275 ml	12
Spray Clean Spray-on Fabric Cleaner		275 ml	12
Superpruf Aerosol		300ml	12
2-in-1 Cleaner Proofer - Cleans & Proofs in 1 Wash		300 ml	12
Wax Cotton Spray		250 ml	12
Wax Cotton Dressing		180 g	12



### Outdoor Sports

Fabsil	Silicone Water Repellent for all fabrics	400ml Aerosol	12
		600ml Aerosol	12
Fabsil + UV		1 litre	10
		2.5 litre	10
		5 litre	1
		25 litre	1
Fabsil Gold	Highly Concentrated Water Repellent	250 ml Aerosol	12
	Treatment	1 litre	10
		5 litre	1
		25 litre	1



### Rugwash and Proof

Rugwash Plus	For Horse Rugs Blankets & Sheets	5 litre	1
	Contains Antibacterial agent	25 litre	1
Universal Rugproof	Proofing for all Fabrics	5 litre	1
	Wash-in for convenience or Dilute and	25 litre	1
	Brush-on when a wash in is not required.		







Abbey England Limited  
 Abbey House  
 Haig Road  
 Parkgate Industrial Estate  
 Knutsford  
 Cheshire WA16 8DX  
 England

Telephone: +44(0)1565 650343  
 Fax: +44(0)1565 633825

E-mail: [sales@ridingbitz.com](mailto:sales@ridingbitz.com)  
[www.ridingbitz.com](http://www.ridingbitz.com)

